



Little Buddy™ II

Conveyor Dryer with built in Heat Control

18" wide by 5' long conveyor dryer
Document # 16-437 Rev: G

Assembly and Operating Instructions

Please review all of these instructions prior to assembly.

The *Little Buddy* is packaged in 2-cartons for shipment. Please make sure all pieces have been received before attempting assembly.

Tools Required: Two ½" wrenches & needle nose pliers

Label on Box	Qty	Contents
LB15-C-120-HC, LB15-C-240-HC or LB15-C-HC-CE	1	Drive half of Conveyor Bed, with motor
	1	Take Up half of Conveyor Bed
	1	Conveyor Belt
	4	Conveyor Leg Assy
	2	Leg Cross Assy
	1	Shelf
LB15-2000C-HC LB15-3000C-HC or LB15-3000C-HC-CE	1	Assembly Instructions
	1	Heating Chamber
	1	4 inch Duct Collar
	2	End Shield

Accessories:

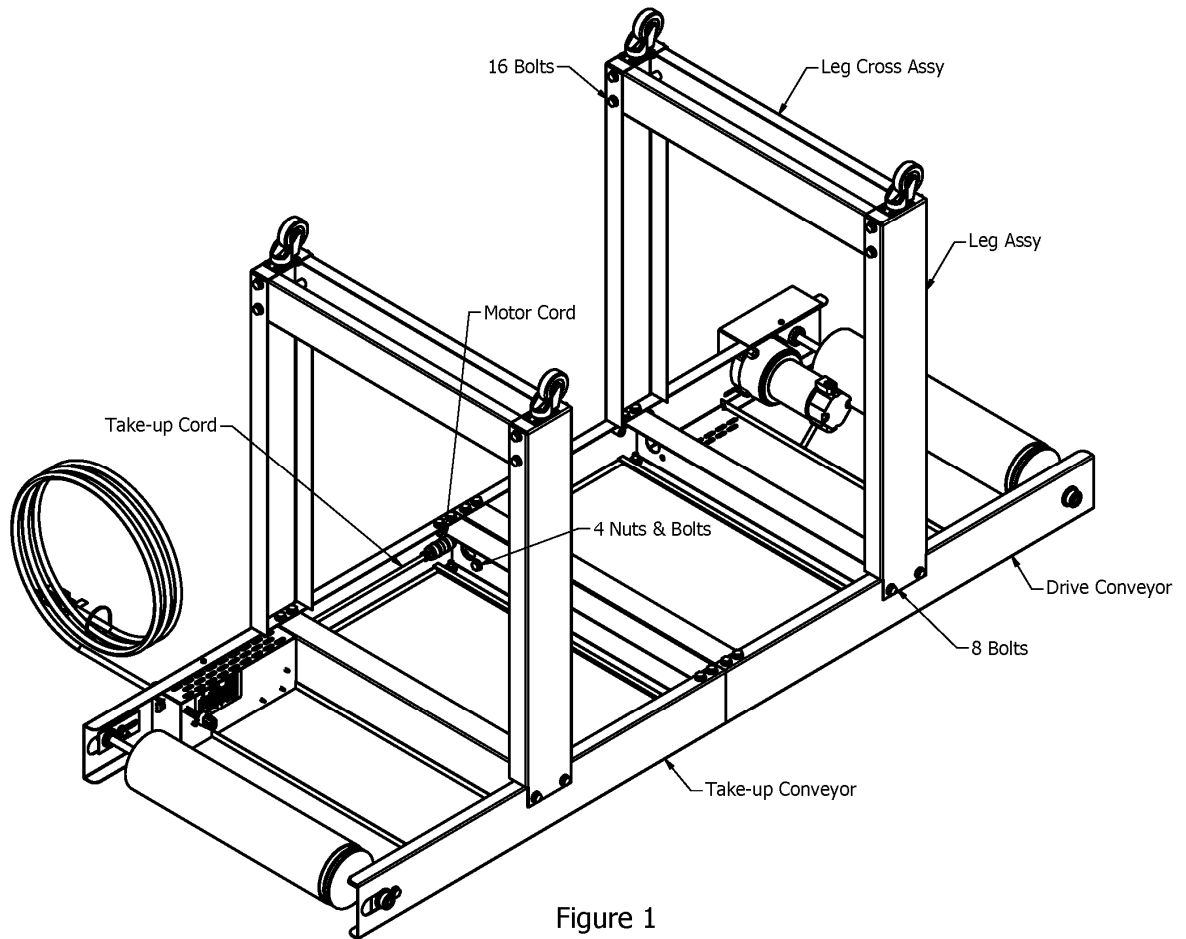
- **LB02-EX Exhaust Kit**
- **LB15-HK Height Kit (Raises chamber 5")**

Note: Portions of the assembly procedure require 2 people.

Unpack, identify, and inspect all parts. Report any missing or damaged items. Cover a 3' x 7' area on the floor with towels, cardboard, carpet, etc. to protect the painted parts from being scratched during assembly.

Conveyor Bed Assembly:

1. Place the Conveyor Drive Assembly on the covered floor.(see Fig. 1)
2. Remove 4 nuts & bolts from end of conveyor.
3. Butt the Conveyor Take-Up Assembly to the Drive Assembly. Be sure that the groove on each roller drum is on the same side of the bed.
4. Bolt the bed assembly together using 4 bolts & nuts from step 2.
5. Plug motor cord to take-up cord. (round plug)
6. Remove 8 bolts from sides of conveyor.
7. Install 4 legs with 8 bolts from step 5. Leave bolts loose. (see Fig. 1).



8. Remove 16 bolts from 2 leg crosses.
9. Install 2 leg crosses to legs with 16 bolts from step 7.
10. Tighten all bolts.
11. **Using two people** turn conveyor bed over onto its casters.
12. Install shelf on top of leg crosses. (see Fig. 2) **Maximum Capacity 50 Pounds**

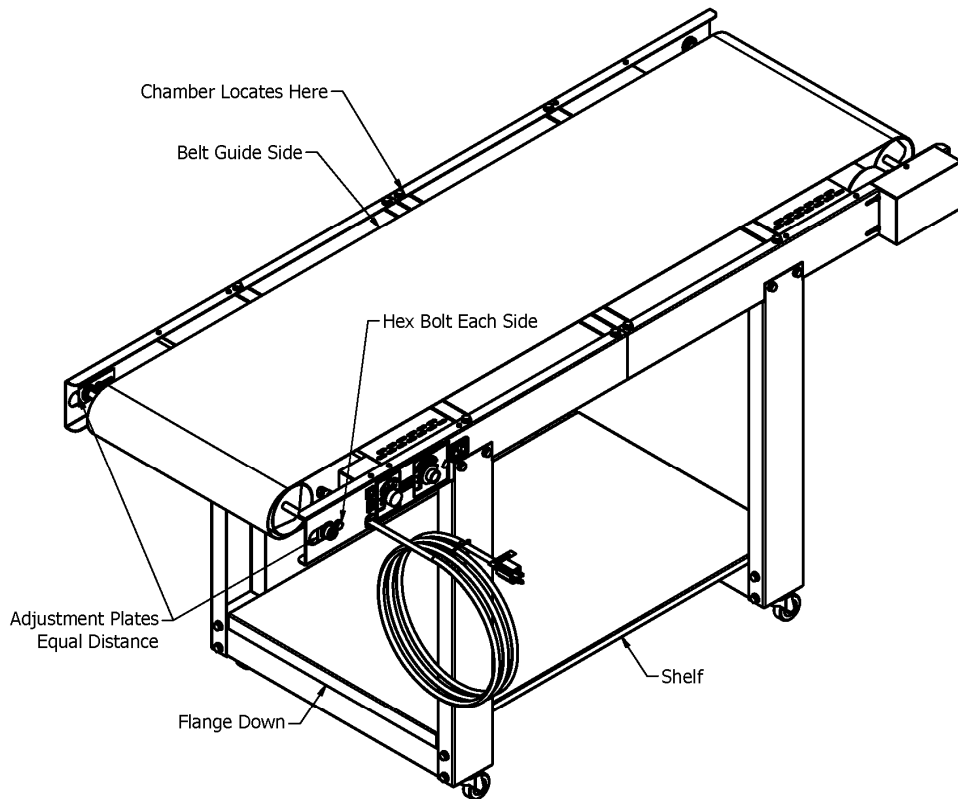


Figure 2

Conveyor Belt Installation:

1. Determine the product side of the belt. A rubber guide is stitched onto one edge of the belt. This guide is designed to ride in the roller drum grooves to provide Hassle-Free-Tracking.
2. Carefully remove the splice pin from the inside teeth of the splice connector by pulling gently with needle nose pliers. **DO NOT BEND**; this pin will be reinserted later.
3. Lay the belt on the conveyor bed aligning the edge guide with the roller drum grooves.
4. Pull the ends of the belt together meshing the teeth of the splice while a **second person** reinserts the splice pin (removed earlier) into the channel formed by the interlocked metal teeth. It may be easier to rotate the belt so that the splice is on top of the conveyor bed before inserting pin. Using needle nose pliers, fully insert the pin until it is centered.
5. **Adjust belt tension:** Loosen 2 hex bolts at Take up Roller (See Fig 2). Pull roller at groove end till you have sag of 1 – 1.5 inches below the cross-members as the belt travels under the conveyor bed. Tighten hex bolt.
6. Adjust opposite end of roller to same location and tighten hex bolt.

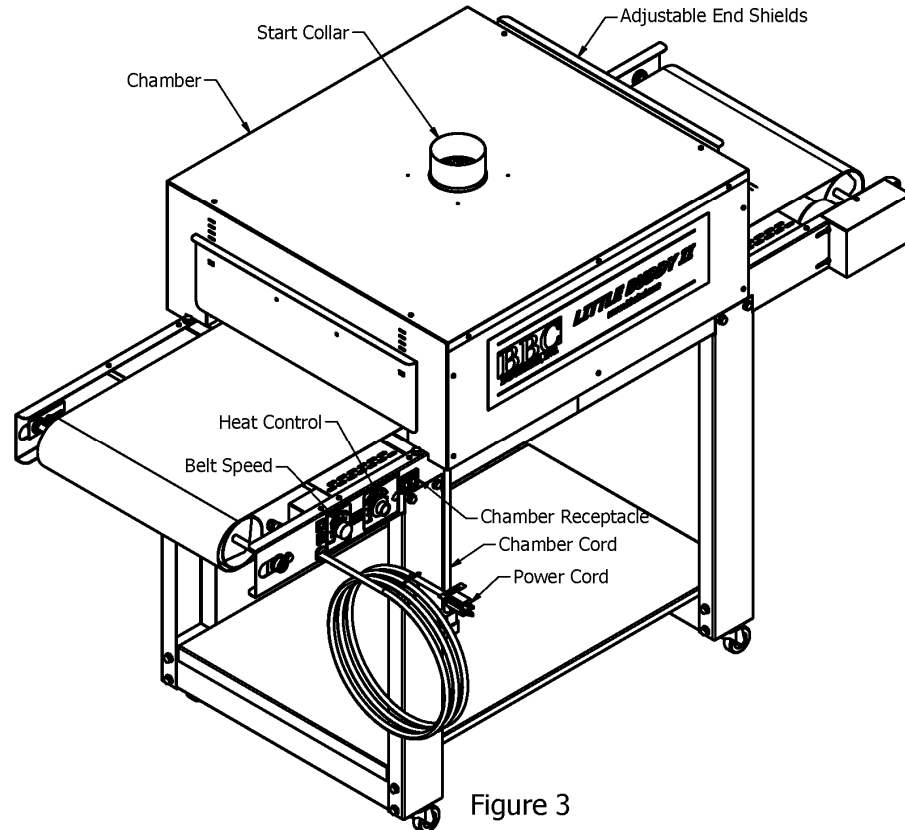


Figure 3

Attaching Heating Chamber:

1. **Using two people** set the chamber onto the conveyor bed (see Fig. 3). The Heating Chamber cord must be on the same side of the Conveyor Bed as the Conveyor cord.
2. The Heating Chamber has openings on the underside rails that fit over the hex-head bolts. The chamber should rest flatly on the conveyor bed.
3. Insert the Duct Start Collar into the hole in the top of the Heating Chamber. Once in position, bend the tabs at the base of the collar outward to secure it in place. **Note:** The chamber will function properly with only the duct start collar installed. Installing a two to three foot section of 4" diameter ductwork on the start collar will improve the capture of heat and vapors created during the curing process. Optional exhaust kit (LB02-EX) available.
4. Plug the Heating Chamber cord into the receptacle on the Conveyor.

Recommended Initial Start-Up Procedure:

1. **DO NOT** plug the equipment in (or apply power) until instructed to do so.

Note: The Little Buddy LB015-2000-HC requires a 120 Volt, 20 Amp circuit.
The Little Buddy LB15-3000-HC & LB15-3000-HC-CE requires a 240 Volt, 20

Amp circuit. Any attempt to operate the Little Buddy without the cord/plug provided by the manufacturer will void the warranty.

2. Plug the conveyor drive into a suitable power source.
3. Turn Belt Speed to 5. Flip rocker switch on conveyor to ON position to start belt. Listen for any unusual noises. Check to see if the rubber edge guide is riding in the roller drum grooves.
4. Turn Heat Control to 5. The green indicator light will illuminate.

Caution: DO NOT operate Heating Chamber unless belt is moving. Heat will damage an idle belt.

5. Verify that the heating element is functioning: after about a minute of operation, briefly feel just inside both the entrance and exit ends of the chamber. The area should be warm.

Caution: Heating element is exposed inside the chamber and is operating at very high temperatures. Keep your hand close to the moving belt (without touching it).

Note: Some smoke/vapor and odor may be noticed during initial start-up due to residual material from the manufacturing process burning off the elements.

6. Working temperature will be reached after a ten-minute warm-up.

Test articles may be run to determine the optimal speed and heat setting for your environment and products.

Belt speed can be determined by placing a small item that will not melt, like a coin, on the conveyor belt and recording the time it takes to travel through the chamber.

Note: The speed and temperature of the unit may vary slightly with fluctuations in power/voltage servicing the equipment.

Process an item through the dryer. Evaluate the completed article according to your quality standards. If the equipment is being used for curing of ink on garments, we recommend washing the processed garment as the definitive test.

The conveyor dryer is now ready for normal **Use and Operation**.

Routine Maintenance: Performed after first week and every 100 hours of operation.

1. The belt should be replaced if it has any tears, voids, separations, fraying, or no longer rides in the roller drum groove due to excessive wear.
2. Belt tension: the belt will relax over time and tension may have to be adjusted by the instructions above.
3. Brush wear or noise: Replace motor brushes. Contact BBC.



WARRANTY

BBC Industries, Inc. warrants their products to be free from defects in workmanship at the time of shipment.

The obligation under the above warranty shall be limited to the repair or replacement of any part or parts manufactured by BBC Industries, Inc. without charge F.O.B. factory that may prove defective within 12 months from the date of shipment, which are returned to BBC Industries, Inc.

The above warranties are the only warranties made with respect to the equipment. There is no implied warranty of merchantability or of fitness.

EXCLUSIONS:

There is no warranty on parts not manufactured by BBC Industries, Inc., other than the respective manufacturer's warranty, if any.

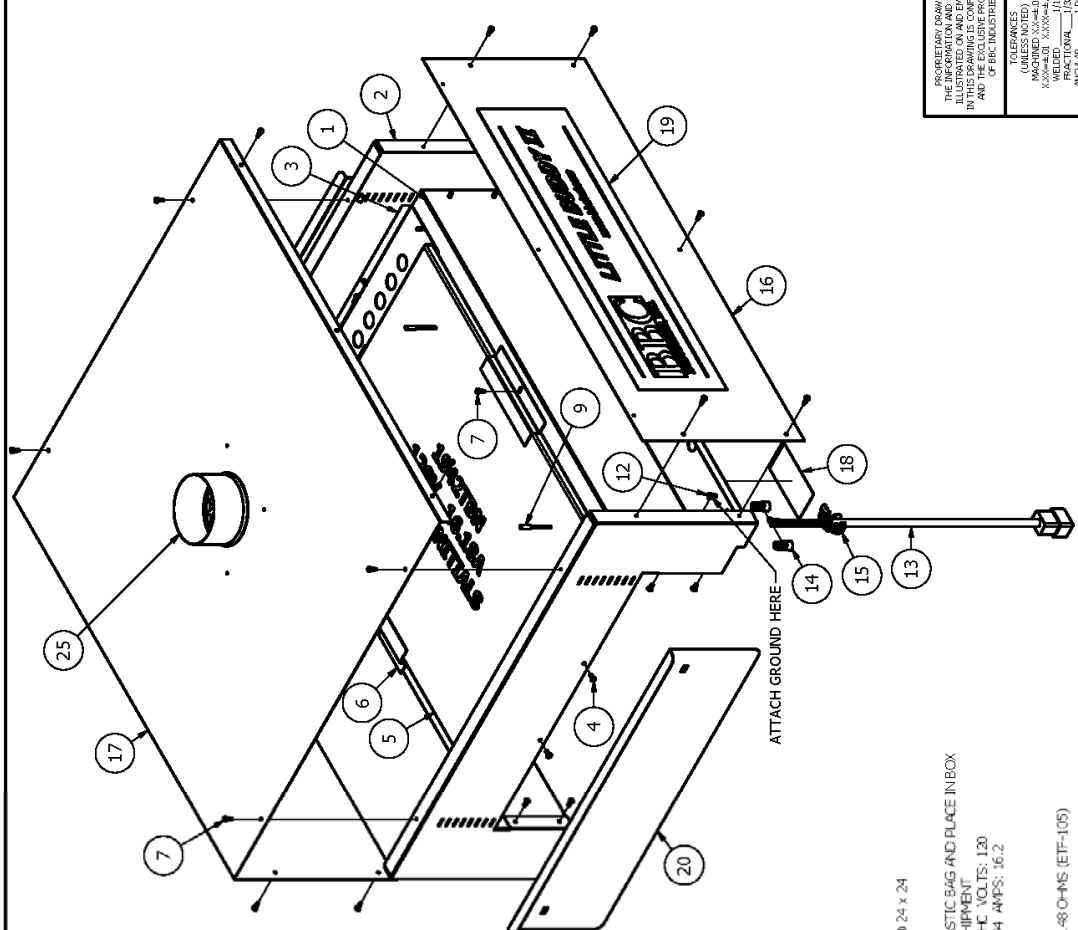
The warranty against defects shall not extend to damage caused from any of the following:

- Transport by carrier
- Corrosion
- Operation or use in a manner inconsistent with specifications and/or operating instructions
- Ordinary wear, accident, improper installation, or maintenance
- Alterations made to equipment in any way

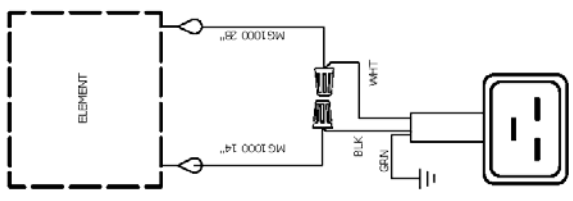
BBC Industries, Inc. shall not be liable for any losses or damages, including but not limited to incidental or consequential damages, suffered or incurred because the equipment proves to be defective either upon installation or during its operation or use.

Shipment of defective parts to BBC Industries, Inc. and the return shipment of any repaired or replacement parts from BBC Industries, Inc. shall be the purchaser's/user's expense.

PARTS LIST			
ITEM	QTY	PART NUMBER	DESCRIPTION
1	2	LB15-001	INNER PANEL
2	2	LB09-004	CHAMBER END CAP
3	2	LB09-032	BAFFLE
4	20	25-206	RIVET 5/32 52D
5	1	1942TBN	ELEMENT 18x24 1941W
6	2	LB09-003	ELEMENT BRACKET
7	19	25-001	SCREW #6 x 3/8 PHSMS BO
8	3.5'	90-312	12 GA MG1000
9	2	87-001	CRIMP, LARGE
10	10.35F	33-007	INSULATION DURABACK
11	.067#	43-008	3/8 BANDING
12	1	25-018	SCREW 8-32 x 3/8 TYPE F
13	1	90-478	CORDSET 20" C-20
14	2	87-006	WIRE NUT (2PC) MODEL 11
15	1	22-074	STRAIN RELIEF 12/3 CORD
16	1	LB15-002	SIDE PANEL
17	1	LB15-003	CHAMBER TOP
18	1	15-202	BLACK BODY LABEL
19	1	15-021	LABEL LB
20	2	LB09-002	END SHIELD
21	8	PM-12	FOAM BAG 12"
22	1	BOX-LB02C	CHAMBER BOX
23	1	BOX-LB INSERT	INSERT
24	1	16-437	LB MANUAL
25	1	22-093	4" START COLLAR



WIRING DIAGRAM



- NOTES:
- INSULATION: 2 @ 5.5 x 30 2 @ 24 x 24
 - WIRE: 1 @ 14" 1 @ 28"
 - BANDING: 1 @ 40"
 - PACK DUCT COLLAR & MANUAL IN PLASTIC BAG AND PLACE IN BOX
 - TAPE END SHIELDS TO INSERT FOR SHIPMENT
 - LABEL INFO: MODEL NO. LB15-2000C-HC VOLTS: 120
PH: 1 HZ: 50/60 KW: 1.94 AMPS: 16.2
 - TESTING: IN THE FOLLOWING ORDER:
-CONTINUITY OF GROUND
-HI-POT 1.2KV FOR 1 SEC.
-RESISTANCE OF ELEMENT 7.047 48 OHMS (EITF-105)

Black Body Chamber
 SCREEN PRINT DRIVERS
 SHEET 1 OF 1

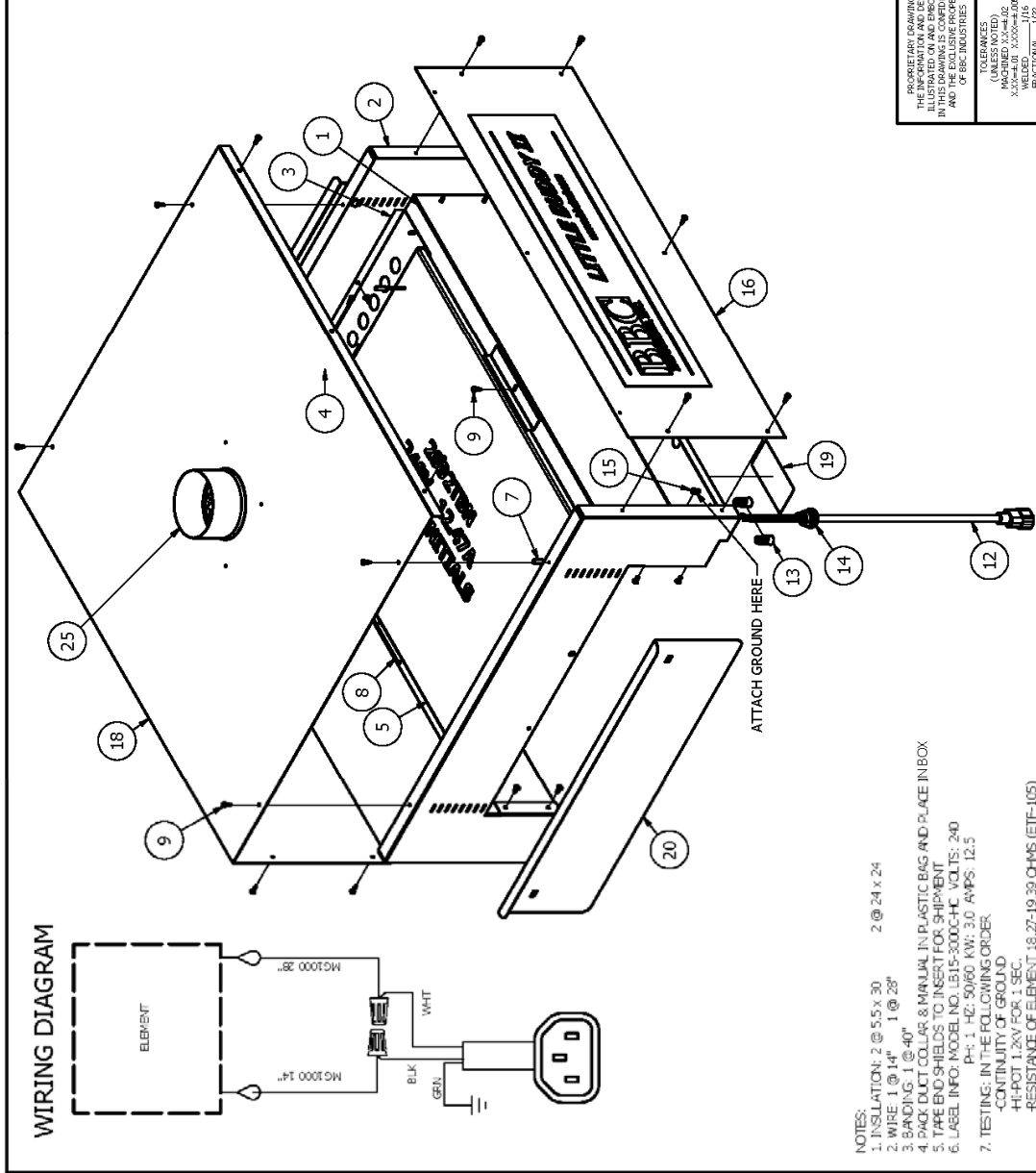
MATERIAL: N/A
 SCALE: 1:1
 DATE: 6/10/2015
 NAME: JRW
 PART NO.: LB15-2000C-HC

PROPRIETARY DRAWING
 THE INFORMATION AND DESIGN
 ILLUSTRATED ON AND CONTAINED
 HEREIN IS THE PROPERTY OF
 BIC INDUSTRIES, INC.

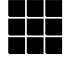
BIC INDUSTRIES, INC.
 5 CHAFFER DRIVE
 PACIFIC MO 63069 USA
 800-694-1205 WWW.BICIND.COM

TOLERANCES
 (UNLESS NOTED)
 X.XX"±0.01 X.XXX"±0.006
 WELDED JOINTS
 ANGLE: 45°

PARTS LIST			
ITEM	QTY	PART NUMBER	DESCRIPTION
1	2	LB15-001	INNER PANEL
2	2	LB09-004	CHAMBER END CAP
3	2	LB09-032	BAFFLE
4	20	25-206	RIVET 5/32 52D
5	1	2992TBN	ELEMENT
6	3.5'	90-312	12 GA MGI000
7	2	87-001	CRIMP, LARGE
8	2	LB09-003	ELEMENT BRACKET
9	19	25-001	SCREW #6 x 3/8 PHSMS BO
10	10.35F	33-007	INSULATION DURABACK
11	.067#	43-008	3/8 BANDING
12	1	90-479	CORDSET 20" C-14
13	2	87-006	WIRE NUT (2PC) MODEL 11
14	1	22-016	STRAIN RELIEF
15	1	25-018	SCREW 8-32 x 3/8 TYPE F
16	1	LB15-002	SIDE PANEL
17	1	15-021	LABEL LB
18	1	LB15-003	CHAMBER TOP
19	1	15-202	BLACK BODY LABEL
20	2	LB09-002	END SHIELD
21	8	PM-12	FOAM BAG 12"
22	1	BOX-LB02C	CHAMBER BOX
23	1	BOX-LB INSERT	INSERT
24	1	16-437	LB MANUAL
25	1	22-093	4" START COLLAR



- NOTES:
- INSULATION: 2 @ 5.5 x 30 2 @ 24 x 24
 - WIRE: 1 @ 14" 1 @ 28"
 - BANDING: 1 @ 40"
 - PACK DUCT COLLAR & MANUAL IN PLASTIC BAG AND PLACE IN BOX
 - TAPE END SHIELDS TO INSERT FOR SHIPMENT
 - TAPE INFO: MODEL NO. LB15-300C-CHC VOLTS: 240 PH: 1 HZ: 50/60 KW: 3.0 AMPS: 12.5
 - TESTING: IN THE FOLLOWING ORDER:
 - CONTINUITY OF GROUND
 - HI-POT 1.2KV FOR 1 SEC.
 - RESISTANCE OF ELEMENT: 18.27-19.39 OHMS (EITF-05)


Black Body
 SCREEN PRINT DRIVERS

TITLE: CHAMBER
 SHEET 1 OF 1

MATERIAL: N/A
 SCALE: 1:6
 DATE: 6/10/2015
 PART NO.: LB15-300C-CHC

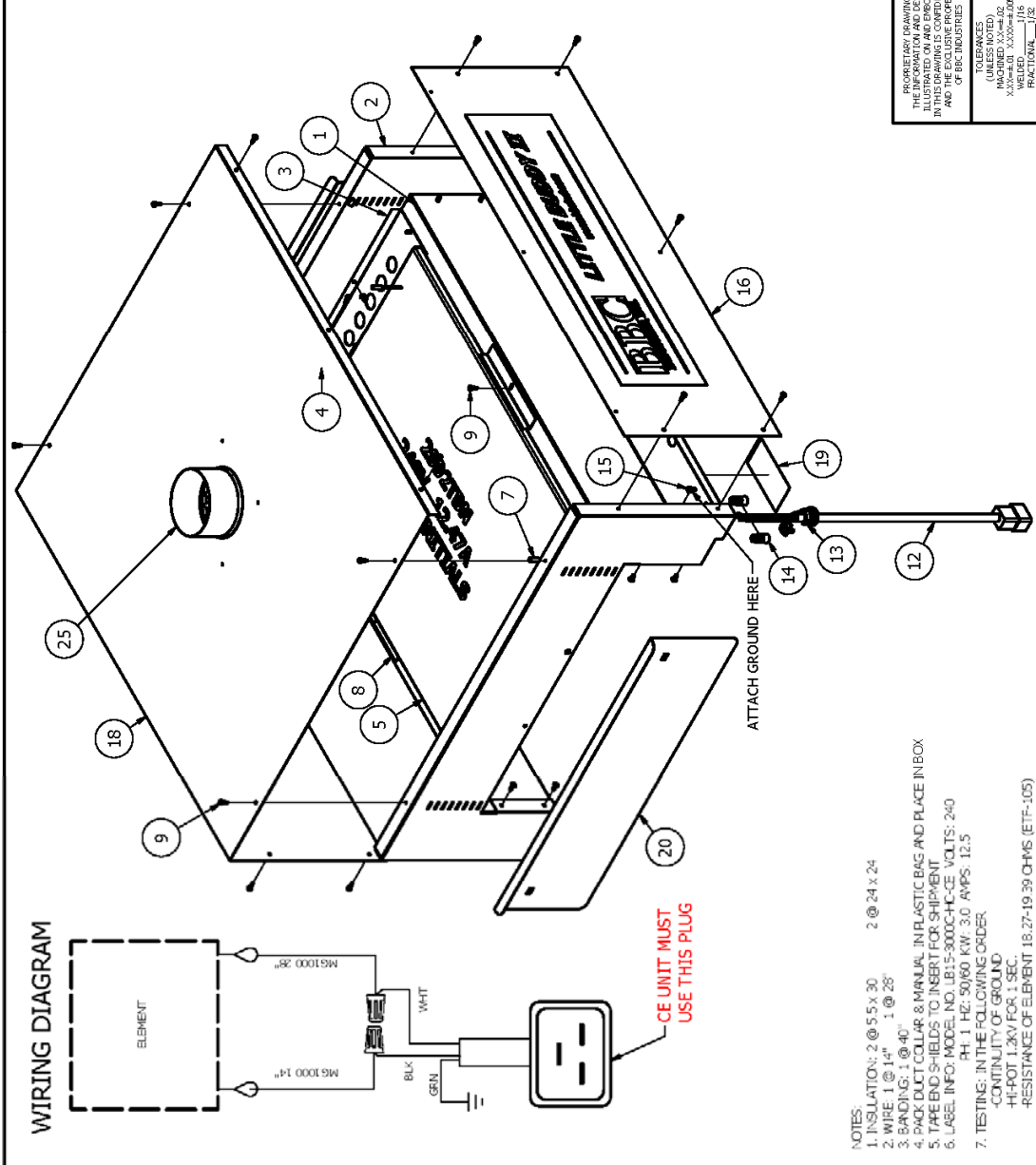
PROPRIETARY DRAWING
 THIS DRAWING IS UNCLASSIFIED
 IN THIS DRAWING IS CONFIDENTIAL
 AND OF BCC INDUSTRIES

BCC INDUSTRIES INC.
 5 CALVERT DRIVE
 PACIFIC MO 63069 USA
 800-654-4205 WWW.BCCIND.COM

(UNCLASSIFIED)
 MACHINED X-A-H-02
 X-SCALE: 0.0000-0.006
 FRACT: 0.001 1/32
 ANGLE: 1 DEG

NAME: JRW
 REV:

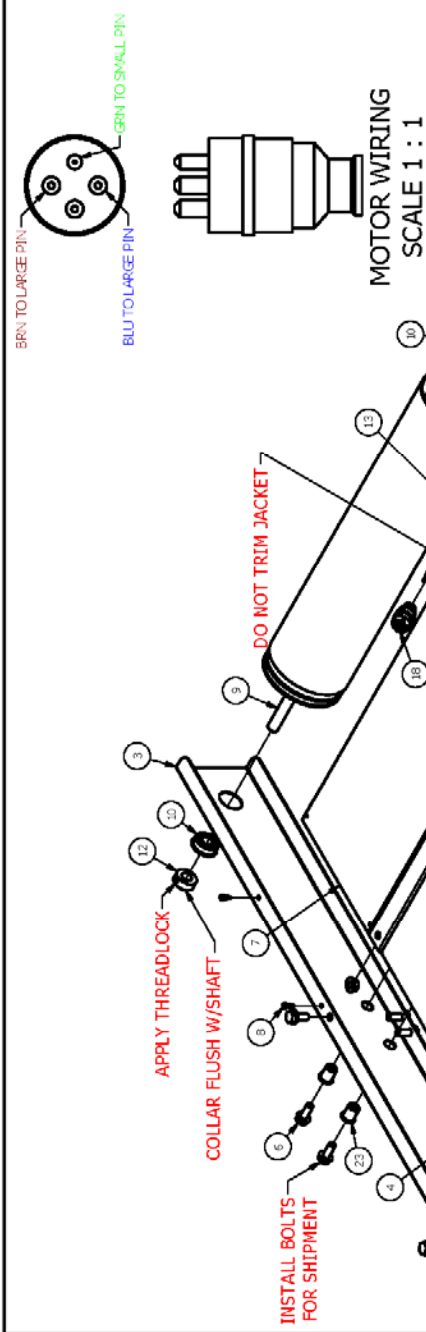
PARTS LIST			
ITEM	QTY	PART NUMBER	DESCRIPTION
1	2	LB15-001	INNER PANEL
2	2	LB09-004	CHAMBER END CAP
3	2	LB09-032	BAFFLE
4	20	25-206	RIVET 5/32 52D
5	1	2992TBN	ELEMENT
6	3.5'	90-312	12 GA MG1000
7	2	87-001	CRIMP, LARGE
8	2	LB09-003	ELEMENT BRACKET
9	19	25-001	SCREW #6 x 3/8 PHSMS BO
10	10.35F	33-007	INSULATION DURABACK
11	.067#	43-008	3/8 BANDING
12	1	90-478	CORDSET 20" C-20
13	1	22-074	STRAIN RELIEF 12/3 CORD
14	2	87-006	WIRE NUT (2PC) MODEL 11
15	1	25-018	SCREW 8-32 x 3/8 TYPE F
16	1	LB15-002	SIDE PANEL
17	1	15-021	LABEL LB
18	1	LB15-003	CHAMBER TOP
19	1	15-202-CE	BLACK BODY CE LABEL
20	2	LB09-002	END SHIELD
21	8	PM-12	FOAM BAG 12"
22	1	BOX-LBO2C	CHAMBER BOX
23	1	BOX-LB INSERT	INSERT
24	1	16-437	LB MANUAL
25	1	22-093	4" START COLLAR



- NOTES:
- INSULATION: 2 @ 5.5 x 30 2 @ 24 x 24
 - WIRE: 1 @ 14" 1 @ 28"
 - BANDING: 1 @ 40"
 - PACK DUCT COLLAR & MANUAL IN PLASTIC BAG AND PLACE IN BOX
 - TAKE END SHIELDS TO INSERT FOR SHIPMENT
 - LABEL INFO: MODEL NO. LB15-3000C-CE VOLTS: 240
 - TESTING: IN THE FOLLOWING ORDER:
 CONTINUITY OF GROUND
 44-F0T 1.2kV FOR 1 SEC.
 RESISTANCE OF ELEMENT 18.27-19.39 OHMS (ETP-105)

	Black Body SCREEN PRINT DRERS	
	BBC INDUSTRIES INC. 5 CAPPER DRIVE PACIFIC NO 63069 USA 800-654-4205 WWW.BBCIND.COM	
TITLE: CHAMBER SHEET 1 OF 1		MATERIAL: N/A SCALE: 1:6 DATE: 7/24/2015 DRAWN: JRW REV:
TOLERANCES (UNLESS NOTED): FINISHED: .0008-0.006 WELDED: .005-0.176 FRACTURE: .1/32 ASSEMBLY: .1 LEGS		

ITEM	QTY	PART NUMBER	DESCRIPTION
1	4	LE15-004	CROSSMEMBER
2	1	LE15-006	SIDE RAIL
3	1	LE15-005	SIDE RAIL
4	2	LE15-024	Chair/Floor
5	30	24-012	NUT 5/16-18 serrated
6	54	25-026	BOLT 5/16-18 X3/4 serrated
7	2	LE15-007	Floor
8	15	25-001	SCREW #6 X 3/8 PHEN6 BO
9	2	LE09-006	CONVEYOR ROLLER
10	4	11-108	BEARING 6384K 361
11	1	09-010	SHROUDED 28R21 5.8oz
12	3	12-100	COLLAR 1/2 SC50Z
13	1	06-252-3	GEARMOTOR
14	4	25-176	SCREW #10-32 X 1/2
15	1	09-213	SPROCKET 28R14 5 BORE KEY SETSCREW
16	1	18-265	#25 CHAIN-41 LINKS WINMASTER
17	1	LE09-011	CHAIN COVER
18	1	LE09-300	BELT 18" W X 133.375" L W/ GUIDE
23	24	24-034	INSERT NUT 5/16-18

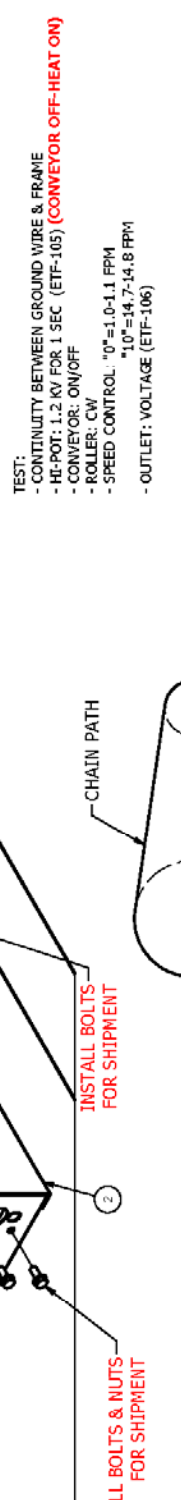


NOTES:

1. LABEL WIRES WITH NUMBERS
2. PART #LE09-300 (BELT) NOT INSTALLED, SHIPPED INSIDE BOX
3. SPEED CONTROL TRIM POT SETTINGS:
IR COMP: MIDPOINT OF RANGE
MIN SPD: 12-13 VDC
MAX SPD: 129-130 VDC
4. INPUT VOLTAGE 120 VAC
5. REFERENCE CHAMBER TIME: 10.1 SEC TO 2.3 MIN

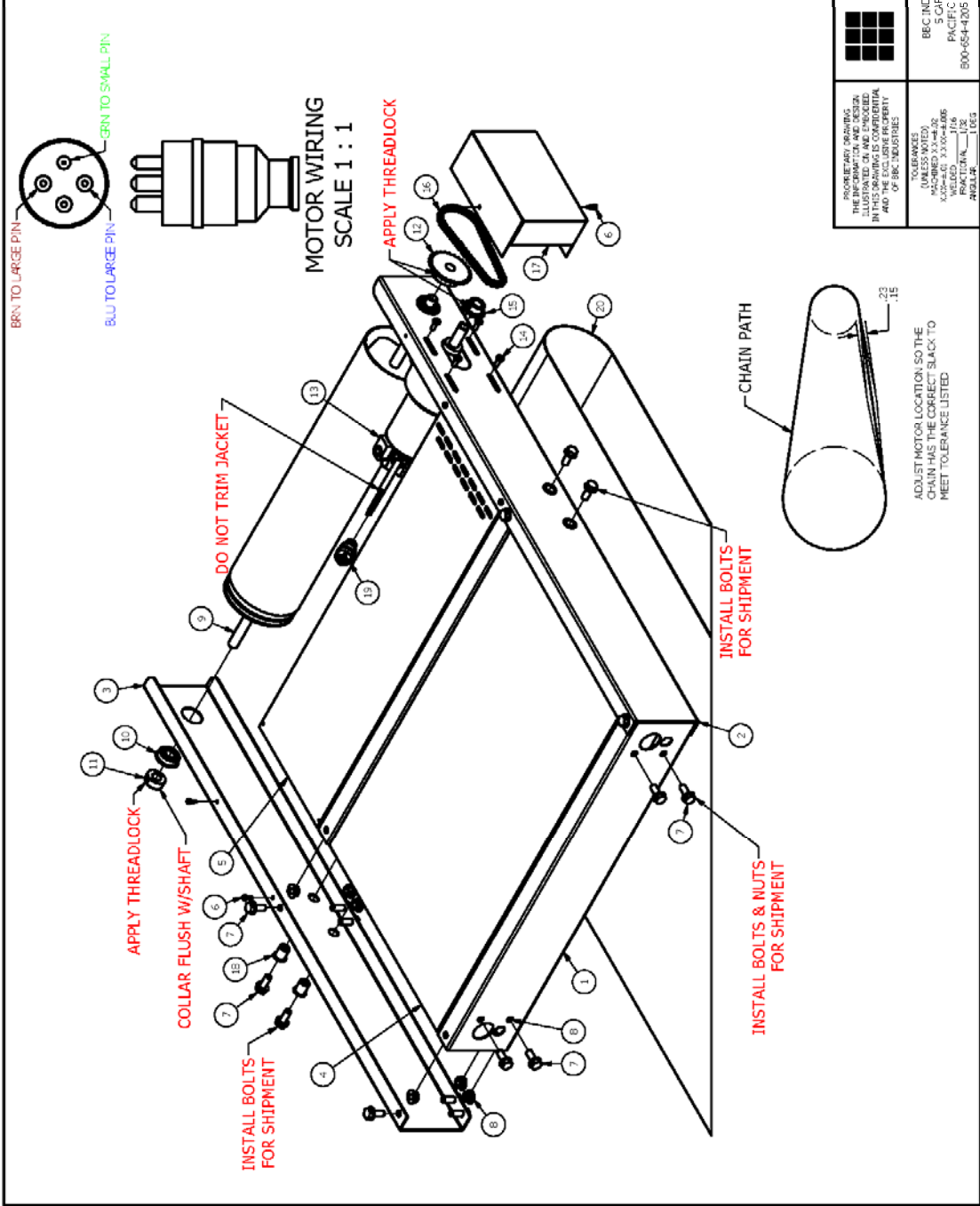
TEST:

- CONTINUITY BETWEEN GROUND WIRE & FRAME
- HE-POT: 1.2 KV FOR 1 SEC (ETF-105) (CONVEYOR OFF-HEAT ON)
- CONVEYOR: ON/OFF
- ROLLER: CW
- SPEED CONTROL: "0"=1.0-1.1 FPM
"10"=14.7-14.8 FPM
- OUTLET: VOLTAGE (ETF-106)



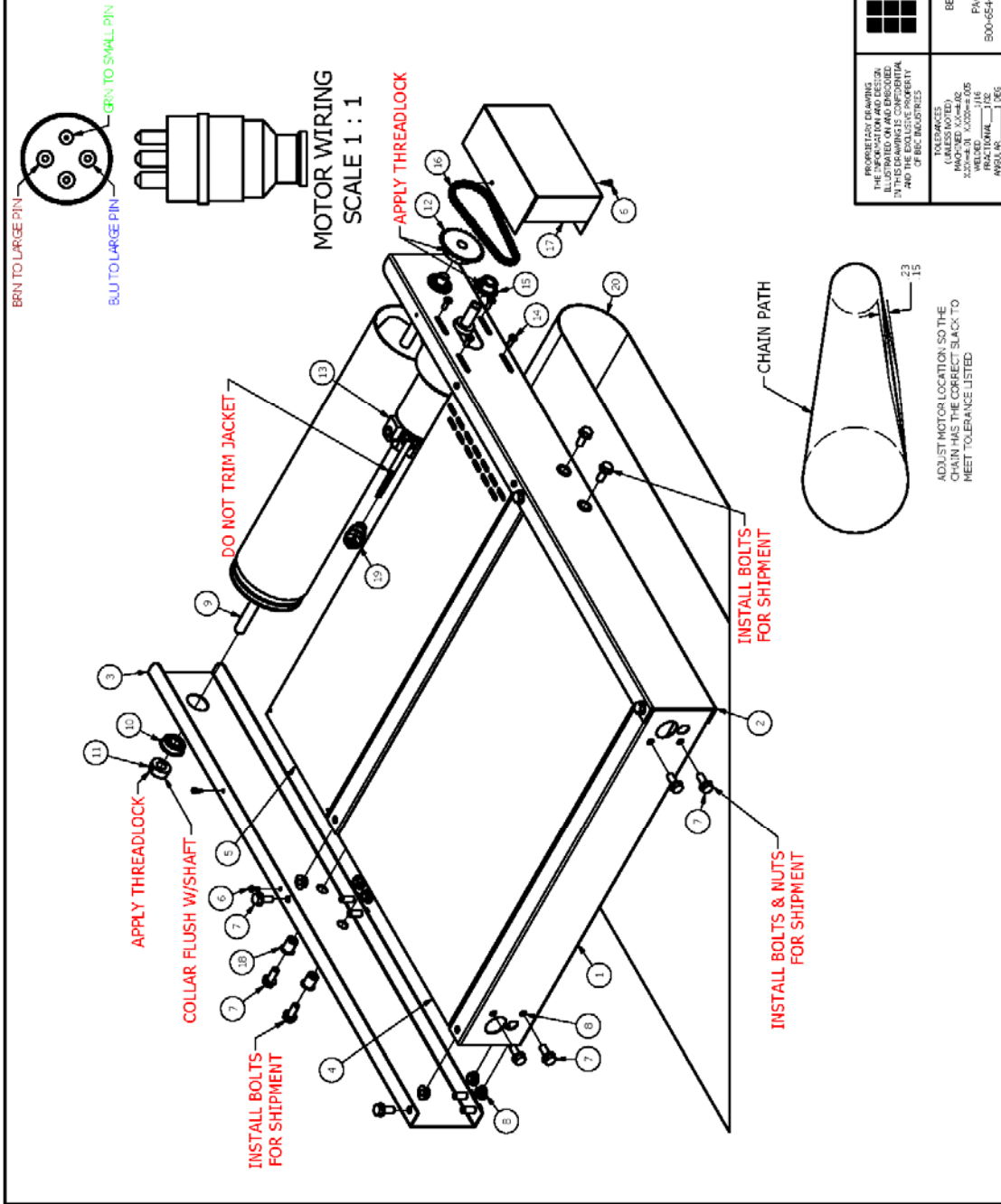
	Black Body SCREEN PRINT ONERS	
	BEC INDUSTRIES INC. 5 GIFFER DRIVE PACIFIC MO 63069 USA 800-654-4205 WWW.BECIND.COM	N/A SCALE 1:5 DATE 7/2/2015 INMR JRW
PROPERTIES: FINISHES THE INFORMATION AND DESIGN ILLUSTRATED ON AND PROVIDED HEREIN ARE THE PROPERTY OF BEC INDUSTRIES INC. AND OF BEC INDUSTRIES	TOLERANCES (UNLESS NOTED) DIMENSIONS: .0005-1/16 WEIGHTS: .0005-1/16 FINISHES: .0005-1/16 MATERIALS: .0005-1/16	TITLE CONVEYOR SHEET 2 OF 4 MATERIAL: N/A SCALE: 1:5 DATE: 7/2/2015 INMR: JRW PART NO: LB15-C-120-HC

PARTS LIST			
ITEM	QTY	PART NUMBER	DESCRIPTION
1	4	LB15-004	CROSSMEMBER
2	1	LD15-006	SIDE RAIL
3	1	LD15-005	SIDE RAIL
4	2	LB15-014	Chamber Floor
5	2	LB15-007	Floor
6	13	25-001	SCREW #6 X 3/8 PHXMS,BO
7	54	25-025	BOLT 5/16-18 X 3/4 SERRATED
8	30	24-012	NUT 5/16-18 SERRATED
9	2	LB09-006	CONVEYOR ROLLER
10	4	11-108	BEARING 6.8X4X3.61
11	3	97-100	COLLAR 1/2 SC507
12	1	06-254	Sprocket - 28T28, .5 Bore, Setscrew
13	1	06-252-3	GEAR MOTOR
14	4	25-176	SCREW #10-32 X 1/2
15	1	09-213	SPROCKET 28S14 .5 BORE KEY SETSCREW
16	1	18-268	Chain - 51 Links - 12.75" L W/MASTER
17	1	LB09-011	CHAIN COVER
18	24	24-014	INSERT NUT 5/16-18
19	1	90-404	4 POLE PLUG SET
20	1	LB09-300	BELT 18" W X 133.375" L W/ GUIDE



	Black Body SCREEN PRINT DRERS	
	BBC INDUSTRIES INC. 5 CAPPER DRIVE PACIFIC MO 63069 USA 800-654-4295 WWW.BBCIND.COM	
<small> INFORMATION CONTAINED HEREIN IS UNCLASSIFIED EXCEPT WHERE SHOWN OTHERWISE. DATE OF DECLASSIFICATION IS INDEFINITE. </small>		<small> (UNLESS NOTED) DIMENSIONS ARE IN INCHES FRACTIONS DECIMALS WEIGHTS FRACTIONS DECIMALS </small>
TITLE: CONVEYOR		MATERIAL: N/A
SHEET 2 OF 4		SCALE: 1:5 DATE: 7/6/2015 NAME: JRW PART NO.: LB15-C-240-HC REV:

PARTS LIST	
ITEM QTY	PART NUMBER DESCRIPTION
1	LB.15-004 CROSSMEMBER
2	LB.15-006 SIDE RAIL
3	LB.15-005 SIDE RAIL
4	LB.15-014 Chamber Floor
5	LB.15-007 Floor
6	SCREW #6 x 3/8 PHXMS BO
7	BOLT 5/16-18 X 3/4 SERRATED
8	NUT 5/16-18 SERRATED
9	CONVEYOR ROLLER
10	BEARING 6384K361
11	COLLAR 1/2 SC50Z
12	GEARMOTOR
13	Sprocket - 28T 28 .15 Bore, Setcrew
14	SCREW #10-32 x 1/2
15	SPROCKET 28T 14 .5 ROPE KEY SETSCREW
16	Chain - 51 Links - 12.75" L W/MASTER
17	CHAIN COVER
18	INSERT NUT 5/16-18
19	4 POLE PLUS SET
20	BELT 18" W x 133.375" L w/guide



PROPRIETARY DRAWINGS
 THIS DRAWING IS THE PROPERTY OF BCC INDUSTRIES, INC. AND THE EXCLUSIVE PROPERTY OF BCC INDUSTRIES, INC.
 UNLESS OTHERWISE SPECIFIED, DIMENSIONS ARE IN INCHES AND DECIMALS THEREOF.
 UNLESS OTHERWISE SPECIFIED, DIMENSIONS ARE IN MILLIMETERS AND DECIMALS THEREOF.
 UNLESS OTHERWISE SPECIFIED, DIMENSIONS ARE IN MILLIMETERS AND DECIMALS THEREOF.

Black Body
 SCREEN PRINT DRIVERS

BCC INDUSTRIES, INC.
 10000 W. 100th Ave.
 P.O. Box 100
 PACTEC MO, 63669 USA
 800-654-1205 WWW.BCCIND.COM

TITLE
CONVEYOR

SHEET 2 OF 4

MATERIAL: N/A

SCALE: 1:5

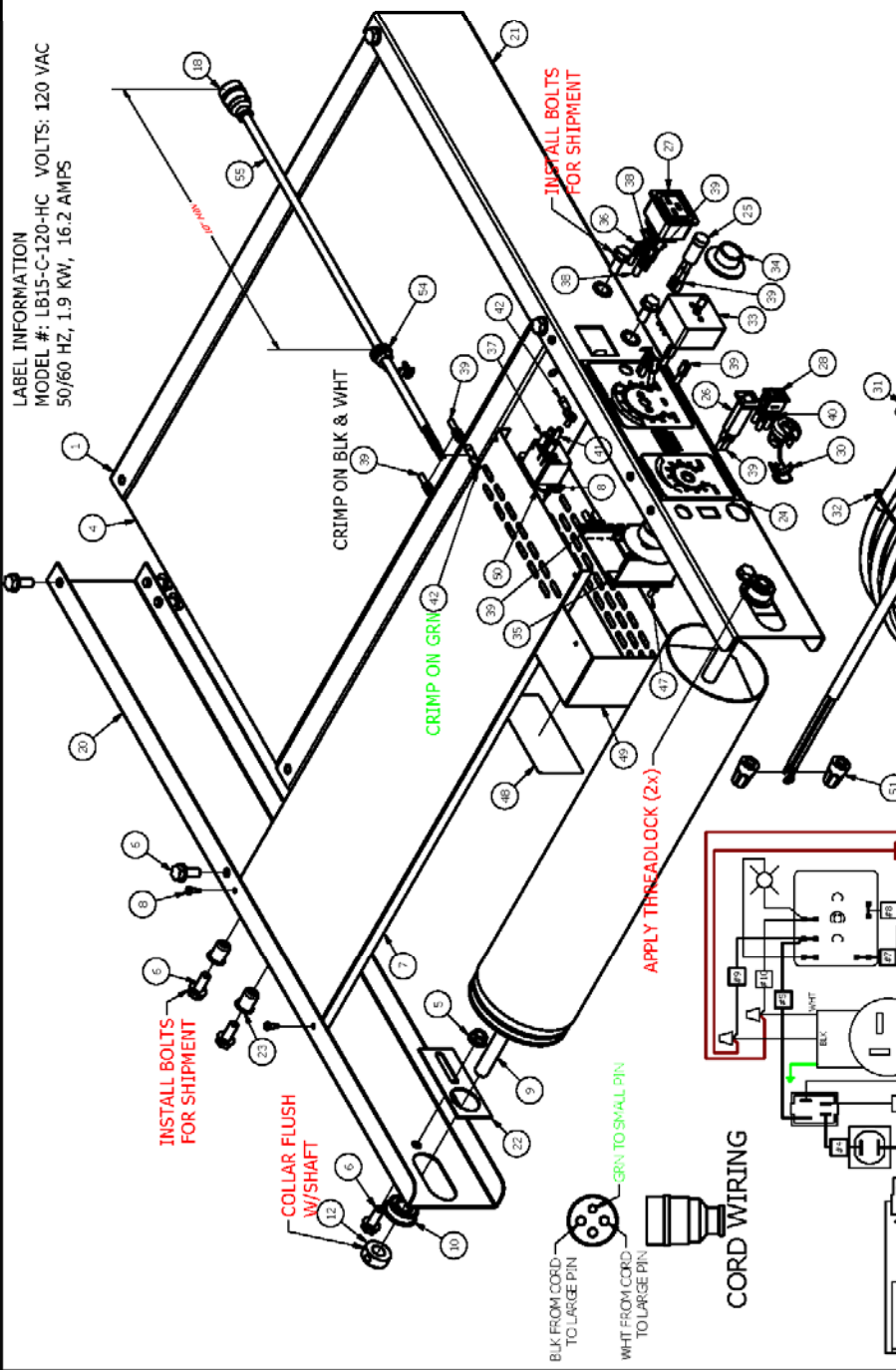
DATE: 7/6/2015

NAME: JRW

PART NO.: LB15-CH-CE

REV:

PARTS LIST			
ITEM	QTY	PART NUMBER	DESCRIPTION
1	4	LB15-004	CROSSMEMBER
2	2	LB15-014	Chamber Floor
3	30	24-012	NUT 5/16-18 SERRATED
4	54	25-025	BOLT 5/16-18 X3/4 SERRATED
5	2	LB15-007	Floor
6	15	25-001	SCREW #6 X 3/8 RH SMS B O
7	2	LB09-006	CONVEYOR ROLLER
8	4	11-108	BEARING 638AK 361
9	3	97-100	COLLAR 1/2 5C902
10	1	90-404	4 POLE PLUG SET
11	1	LB15-011	SIDE RAIL
12	1	LB15-012	SIDE RAIL
13	2	LB09-015	ADJUSTMENT PLATE
14	24	24-014	INSERT NUT 5/16-18
15	1	15-024	CONTROL LABEL
16	1	91-018	GREEN LIGHT 115V
17	1	73-280	BREAKER 1/2 A
18	1	60-031	POWER OUTLET 57103
19	1	90-093	Switch - DPST, 10A/125VAC BA/250VAC
20	1	90-471	CARDSET 12-3 10"
21	1	22-074	STRAIN RELIEF 12/3 CORD
22	1	15-319	Label - 120V
23	1	16-300	CABLE TIE 8" PLTM
24	1	82-312	INFINITE SWITCH 115V
25	1	98-100	KNOB
26	1	09-006-1	Speed Control 120-240VAC I, 90-180VDC
27	3	87-192	1/4 Female QC Piggyback
28	2	87-217	Female Disconnect
29	2	87-204	YELLOW 1/4 FEMALE QC
30	12	87-203	TERMINAL RED 1/4 FEMALE QC
31	4	87-193	TERMINAL 3/16 QC .032 TAB
32	2	87-191	TERMINAL RED RING #6 STLD
33	5	90-162	WIRE GRN 18 AWG MTW
34	2	90-312	WIRE 12 AWG MG1000
35	3	90-160	WIRE BLK 18 AWG MTW
36	3	90-161	WIRE WHT 18 AWG MTW
37	2	25-018	SCREW 8-32 X 3/8 TYPE F
38	1	15-202	BLACK BODY LABEL
39	1	LB15-008	CONTROL COVER
40	1	82-935	RELAY/SPST-NO. 30A, 120VAC
41	2	87-005	WIRE NUT (ZFO) MODEL 22
42	1	22-061	STRAIN RELIEF 1200
43	1	90-514(1.5)	CORD 18/3 18"



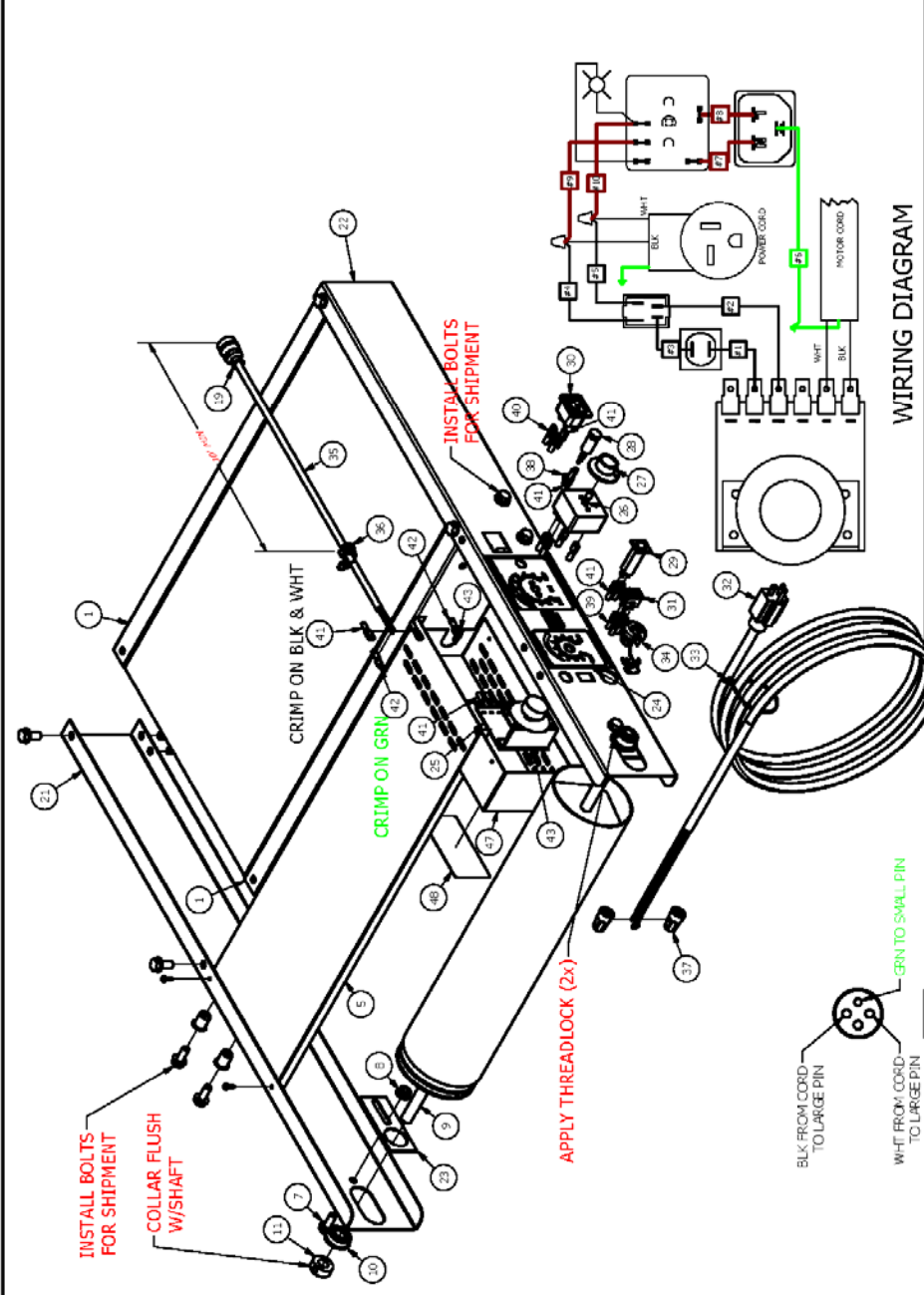
LABEL INFORMATION
 MODEL #: LB15-C-120-HC VOLTS: 120 VAC
 50/60 HZ, 1.9 KW, 16.2 AMPS

	Black Body SCREEN PRINT DRIPS	
	BCC INDUSTRIES, INC. 5 CUPPER DRIVE PACIFIC MO 63069 USA 800-654-4205 WWW.BCCIND.COM	MATERIAL: N/A SCALE: 1:4 DATE: 7/2/2015 PART NO: LB15-C-120-HC
PROPRIETARY DRAWING THIS DRAWING IS UNCLASSIFIED UNLESS INDICATED OTHERWISE IN THIS DRAWING IS CONFIDENTIAL AND NOT TO BE REPRODUCED WITHOUT THE WRITTEN AUTHORITY OF BCC INDUSTRIES	THIS DRAWING IS UNCLASSIFIED UNLESS INDICATED OTHERWISE IN THIS DRAWING IS CONFIDENTIAL AND NOT TO BE REPRODUCED WITHOUT THE WRITTEN AUTHORITY OF BCC INDUSTRIES	TITLE: CONVEYOR SHEET 3 OF 4

PARTS LIST		
ITEM	QTY	PART NUMBER DESCRIPTION
1	4	LB15-004 CROSSMEMBER
2	2	LB15-014 Chamber Floor
3	2	LB15-007 Floor
4	13	25-001 SCREW #6 X 3/8 PHENIS BO
5	54	25-025 NUT 5/16-18 X 3/4 SERRATED
6	30	24-012 NUT 5/16-18 SERRATED
7	2	LB09-006 CONVEYOR ROLLER
8	4	11-108 BEARING 6384K-361
9	3	97-100 COLLAR 1/2 SC50Z
10	24	24-014 INSERT NUT 5/16-18
11	4	90-404 4 POLE PLUG SET
12	1	LB15-011 SIDE RAIL
13	2	LB15-013 SIDE RAIL
14	2	15-024 ADJUSTMENT PLATE
15	1	15-024 CONTROL LABEL
16	1	09-006-1 Speed Control-120-240VAC 1, 90-JB0VDC
17	1	02-313 INFINITE SWITCH 240V
18	1	98-100 KN28
19	1	91-011 GREEN LIGHT 230V
20	1	73-280 BREAKER 1/2 A
21	1	60-004 POWER OUTLET 57320
22	1	96-093 Switch - DPST, 10A/125VAC, 6A/250VAC
23	1	90-472 CORDSET 12-3 230V
24	1	16-300 CABLE TIE 8" PLTZM
25	1	22-074 STRAIN RELIEF 12/3 CORD
26	1	90-534(1.5) CORD 36/3 18'
27	1	22-061 STRAIN RELIEF 1200
28	2	87-005 WRE NUT (GPO) MODEL 22
29	1	87-192 1/4 Female QC-Piggyback
30	4	87-193 TERMINAL 3/16 QC .032 TAB
31	6	87-204 YELLOW 1/4 FEMALE QC
32	1	87-203 TERMINAL RED 1/4 FEMALE QC
33	2	87-191 TERMINAL RED RING #8 STLD
34	2	25-018 SCREW 6-32 X 3/8 TYPE F
35	5	90-162 WRE 18 AWG MTW GRN
36	5	90-160 WRE BLK 18 AWG MTW
37	2	90-312 WRE 12 AWG MG 1000
38	1	15-202 CONTROL COVER
39	1	15-202 BLACK BODY LABEL

LABEL INFORMATION
MODEL #: LB15-C-240-HC VOLTS: 240 VAC
50/60 HZ, 3 KW, 12.5 AMPS

- NOTES:**
- CUT STEM AT 5TH NOTCH FROM BASE OF INFINITE SWITCH
 - USE SCREWS & BUSHING INCLUDED WITH INFINITE SWITCH



WIRING DIAGRAM

Black Body CONVEYOR

SCREEN PRINT ORDERS

FILE: 3 OF 4

MATERIAL: N/A

SCALE: 1:15

DATE: 7/25/2015

NAME: JRW

PART NO: LB15-C-240-HC

REV:

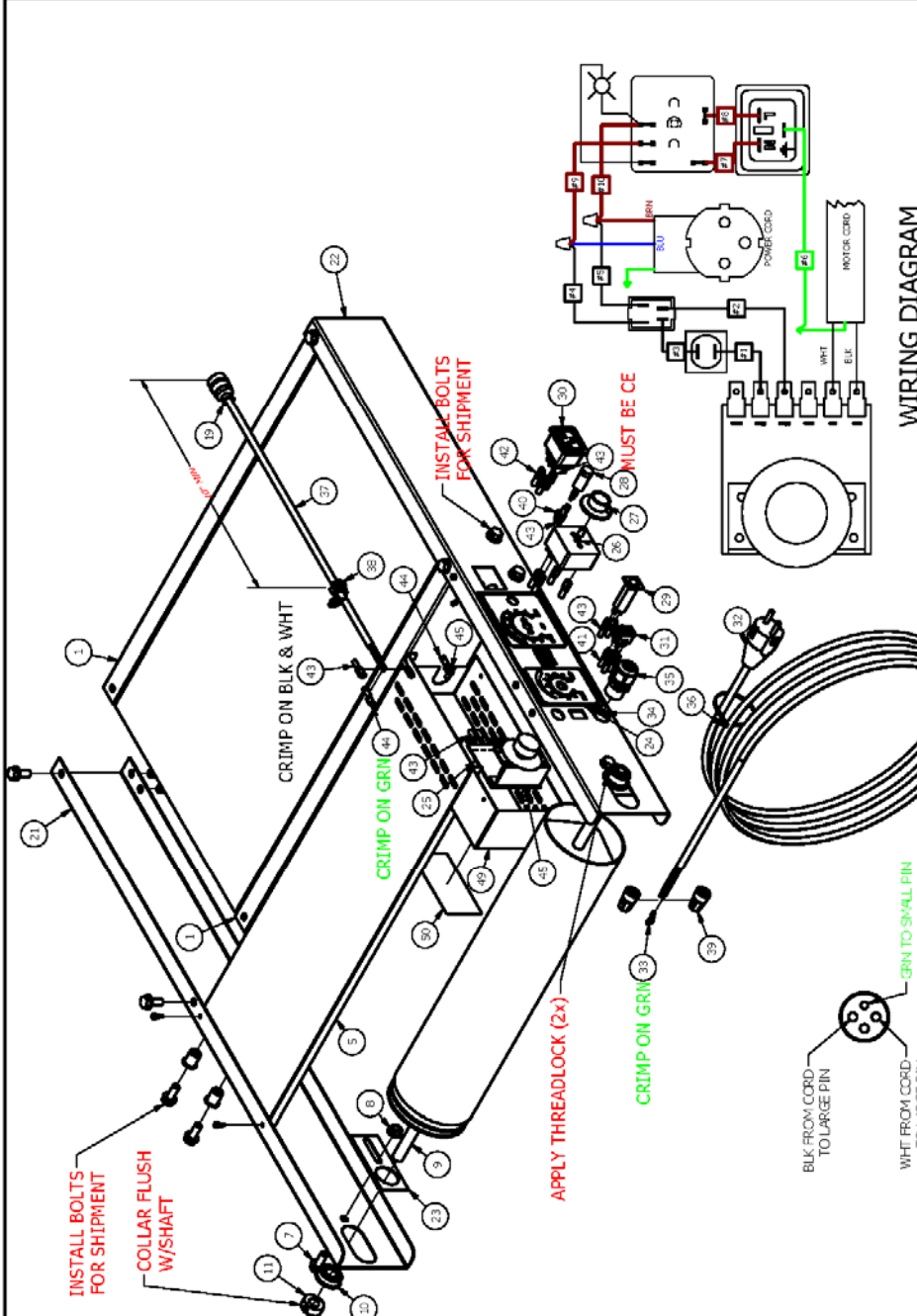
PROPRIETARY DRAWING: THE INFORMATION CONTAINED HEREIN IS UNCLASSIFIED EXCEPT WHERE SHOWN OTHERWISE. IT IS THE PROPERTY OF BEC INDUSTRIES (UNLESS NOTED).

BEC INDUSTRIES

88C INDUSTRIES, INC.
 5 CARRIAGE DRIVE
 PACIFIC MO 63069 USA
 800-654-4205 WWW.BECIND.COM



ITEM	QTY	PART NUMBER	DESCRIPTION
1	4	LB15-004	CROSSMEMBER
2	1	LB15-014	Chamber Floor
3	2	LB15-007	Floor
4	13	25-001	SCREW #6 X 3/8 PHMS BO
5	54	25-025	BOLT 5/16-18 X 3/4 SERATED
6	30	24-012	NUT 5/16-18 SERATED
7	2	LB09-006	CONVEYOR ROLLER
8	4	11-108	BEARING 6384K-361
9	10	97-100	COLLAR 1/2 SCS02
10	24	24-014	INSERT NUT 5/16-18
11	1	90-404	4 ROLLER FLUG SET
12	1	LB15-011	SIDE RAIL
13	1	LB15-012	SIDE RAIL
14	2	LB09-015	ADJUSTMENT PLATE
15	1	15-024	CONTROL LABEL
16	1	09-008-1	Speed Control 120-240VAC I, 30-180VDC
17	1	02-313	INFINITE SWITCH 240V
18	1	98-100	KNOB
19	1	91-011-CE	GREEN LIGHT 230V
20	1	75-280	BREAKER 1/2 A
21	1	60-031	POWER OUTLET 57103
22	1	98-093	SWITCH - DPST, 10A/125VAC, BA/250WAC
23	1	90-488	CORDSET EU1-16P 8'
24	1	87-205	#6 RING TERMINAL
25	1	92-267	1/2 NPT LOCKNUT
26	1	92-259	CORD GRIP
27	1	16-300	CABLE TIE 8" PL2M
28	1	90-514(1.5)	CORD 18/3 18"
29	1	22-061	STRAIN RELIEF 1200
30	2	87-005	WIRE NUT (2PC) MODEL 22
31	1	87-192	1/4 Female QC Piggyback
32	4	87-193	TERMINAL 3716 QC .032 TMB
33	6	87-204	YELLOW 1/4 FEMALE QC
34	8	87-203	TERMINAL RED 1/4 FEMALE QC
35	2	87-191	TERMINAL RED RING #8 STD
36	2	25-018	SCREWS 32 X 3/8 TTYE F
37	5	90-162	WIRE 18 AWG MTW GRN
38	2	27-51	WIRE BLK 18 AWG MTW
39	2	90-312	WIRE 12 AWG MG 1000
40	1	LB15-008	CONTROL COVER
41	1	15-202	BLACK BODY LABEL



WIRING DIAGRAM

Black Body SCREEN PRINT DRIVERS

CONVEYOR

SH-BET 3 OF 4

DATE 7/6/2015

SCALE 1.5

ART NO LB15-CH-CE

REV 3

DESIGNER N/A

MANUFACTURER BCC INDUSTRIES INC.

3000 PACIFIC AVE

509 PACIFIC AVE

800-654-4205 WWW.BCCIND.COM

PROFESSIONAL ENGINEER
THESE DRAWINGS ARE THE PROPERTY OF BCC INDUSTRIES
UNLESS NOTED OTHERWISE, ALL DIMENSIONS ARE IN INCHES UNLESS OTHERWISE SPECIFIED
DRAWN BY: J. L. HARRIS

CORD WIRING

BLK FROM CORD TO LARGE PIN

WHT FROM CORD TO LARGE PIN

GRN TO SMALL PIN

NOTES:

1. CUT STEM AT 5TH NOTCH FROM BASE OF INFINITE SWITCH

2. USE SCREWS & BUSHING INCLUDED WITH INFINITE SWITCH

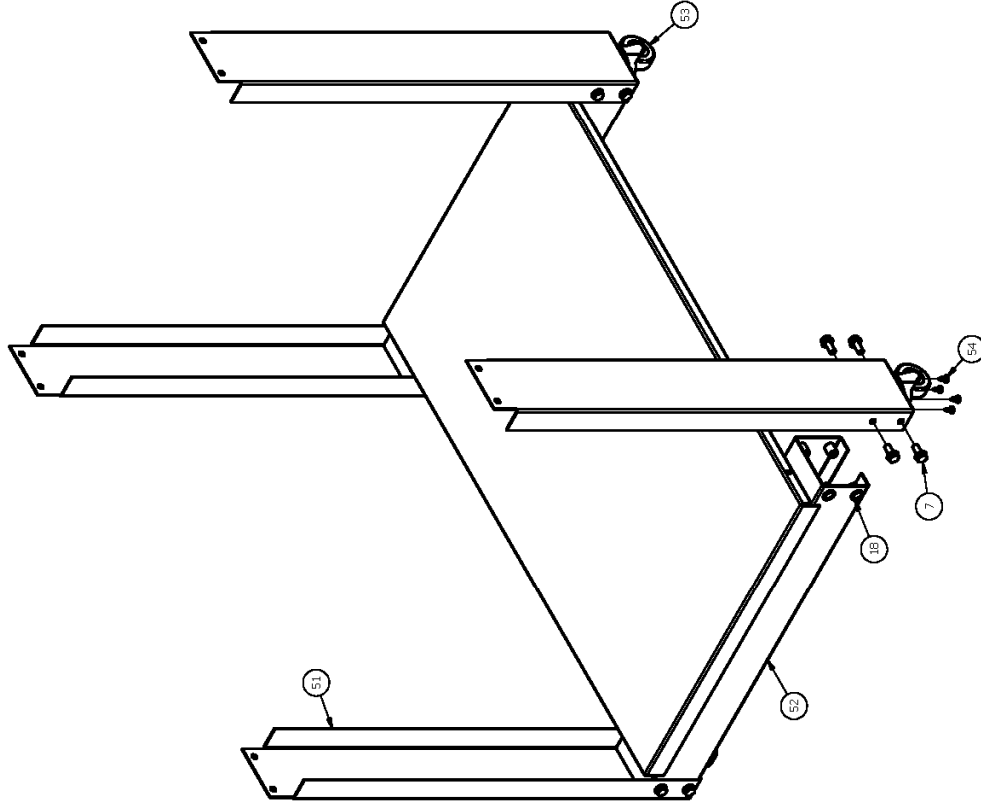
LABEL INFORMATION


MODEL #: LB15-C-CH-CE VOLTS: 240 VAC

50/60 HZ, 3 KW, 12.5 AMPS

PARTS LIST			
ITEM	QTY	PART NUMBER	DESCRIPTION
7	54	25-025	BOLT 5/16-18 X 3/4 SEPARATED
18	24	24-014	INSERT NUT 5/16-18
51	4	LB15-010	CONVEYOR LEG
52	2	LB15-009	LEG CROSS
53	4	28-025	CASTER
54	16	25-245	Screw 10 x 1/2" PHMS
55	1	LB15-016	SHELF
56	8	PM-12	Foam Packing Pearinus 12" Size
57	1	BOX-LB02C	CHAMBER BOX
58	3	BOX-LB INSERT	INSERT
59	3	PM-24	Foam Packing Pearinus 24" Size

- NOTES:
1. INSTALL CASTERS & SCREWS TO LEGS
 2. INSTALL INSERTS & BOLTS TO LEG CROSS
 3. WRAP COMPONENTS AND PACK IN BOX
 4. PM-12'S USED AT CORNERS OF CONVEYORS
 5. PM-24'S USED IN TOP OF BOX WITH LEGS
 6. PACK BELT & SHELF IN BOX.



	Black Body SCREEN PRINT DRIPS		TITLE: CONVEYOR		
	BBC INDUSTRIES INC. 5 CUPPER DRIVE PACIFIC MO 63069 USA 800-654-4205 WWW.BBCIND.COM		MATERIAL: N/A SCALE: 1:4 DATE: 7/16/2015 PART NO: LB15-C-HC-CE		
THIS DRAWING IS THE PROPERTY OF BBC INDUSTRIES. IT IS TO BE USED ONLY FOR THE PROJECT AND FOR THE QUANTITY AND SPECIFICATIONS INDICATED HEREON. ANY REUSE OR MODIFICATION OF THIS DRAWING IS PROHIBITED.		YOUR NAME: _____ (UNLESS NOTED) MACHINED TO DIMENSIONS TOLERANCES: FRACTIONAL: 1/16 DECIMAL: 0.0025 ANGULAR: 1 DEG		SHEET 4 OF 4 DATE: 7/16/2015 DRAWN BY: _____ CHECKED BY: _____ APPROVED BY: _____	