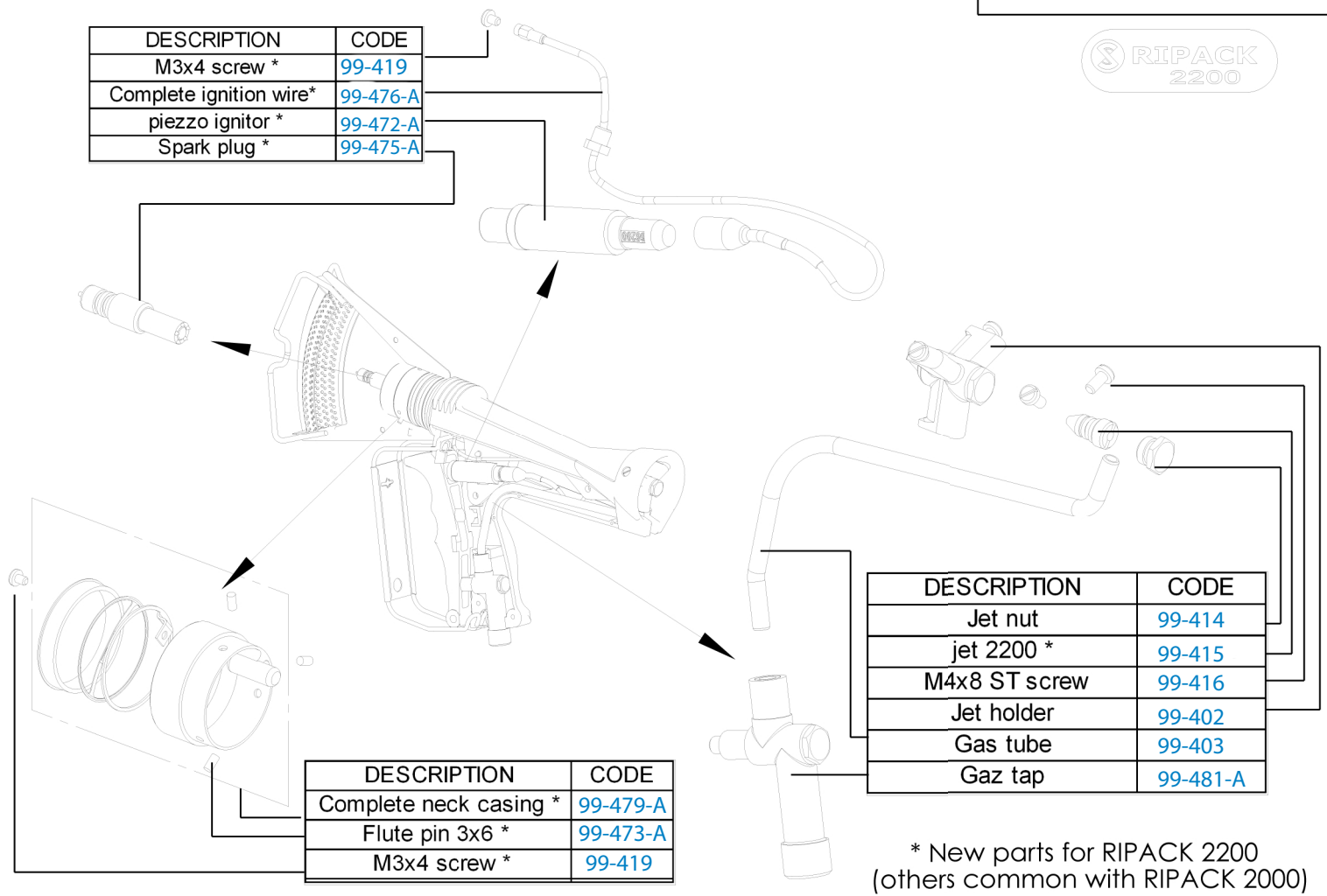


SPARE PART LIST (UL)



DESCRIPTION	CODE
M3x4 screw *	99-419
Complete ignition wire*	99-476-A
piezzo ignitor *	99-472-A
Spark plug *	99-475-A

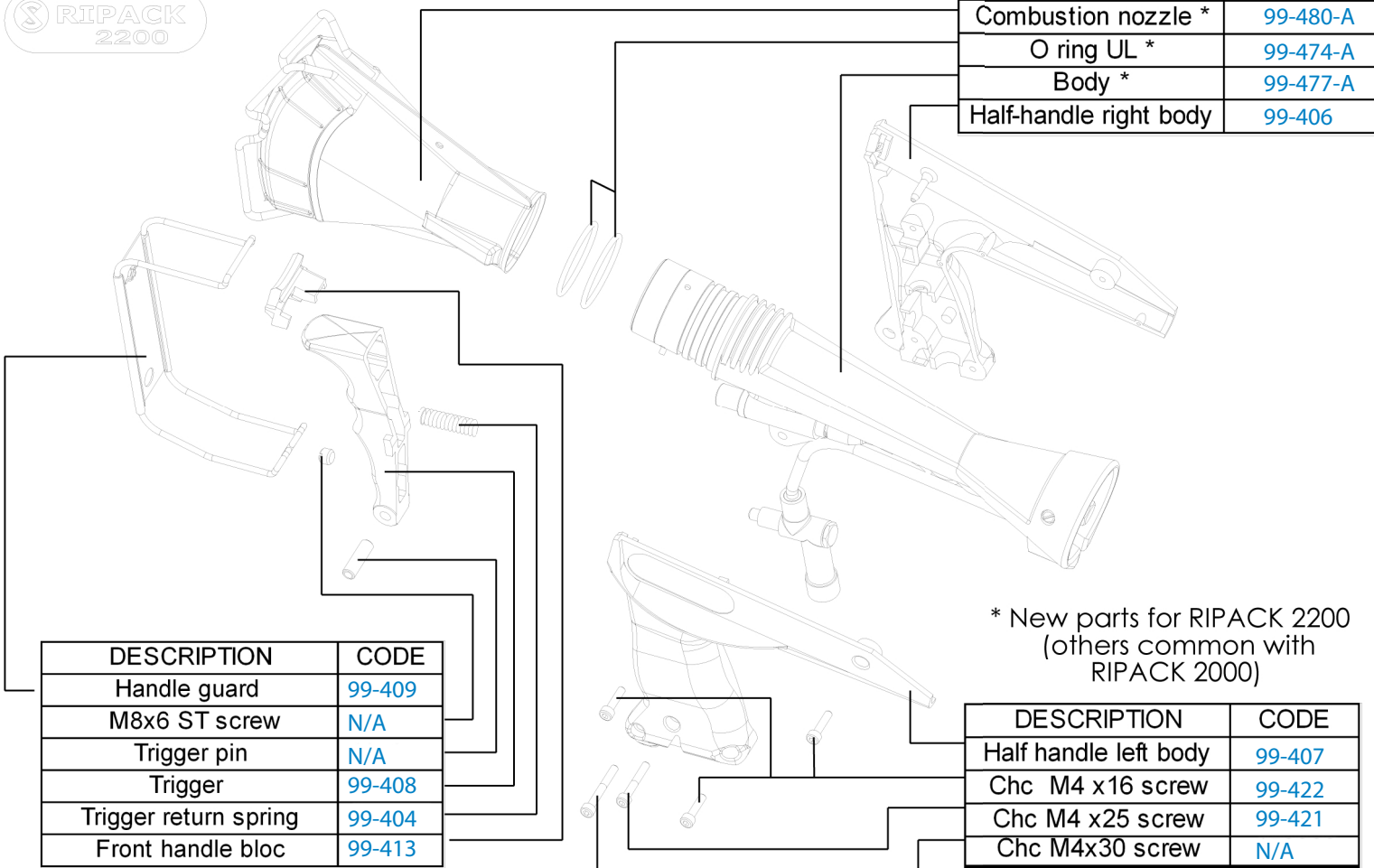


DESCRIPTION	CODE
Complete neck casing *	99-479-A
Flute pin 3x6 *	99-473-A
M3x4 screw *	99-419

DESCRIPTION	CODE
Jet nut	99-414
jet 2200 *	99-415
M4x8 ST screw	99-416
Jet holder	99-402
Gas tube	99-403
Gaz tap	99-481-A

* New parts for RIPACK 2200 (others common with RIPACK 2000)

SPARE PART LIST (UL)



DESCRIPTION	CODE
Combustion nozzle *	99-480-A
O ring UL *	99-474-A
Body *	99-477-A
Half-handle right body	99-406

DESCRIPTION	CODE
Handle guard	99-409
M8x6 ST screw	N/A
Trigger pin	N/A
Trigger	99-408
Trigger return spring	99-404
Front handle bloc	99-413

* New parts for RIPACK 2200 (others common with RIPACK 2000)

DESCRIPTION	CODE
Half handle left body	99-407
Chc M4 x16 screw	99-422
Chc M4 x25 screw	99-421
Chc M4x30 screw	N/A