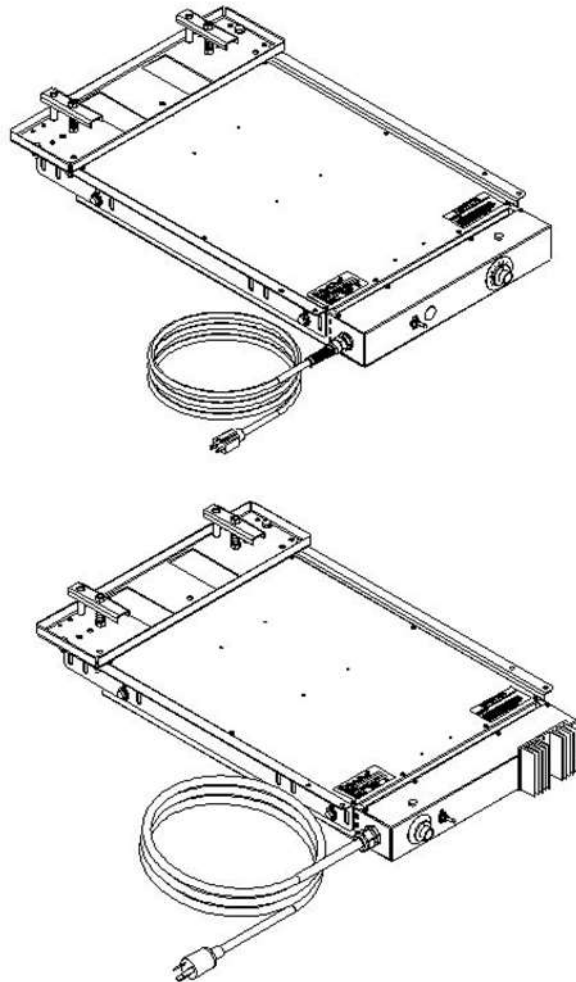




# Owner's Manual AUTO FLASH

*Flat Panel Infrared Flash Dryer  
(Original Document)*



## IMPORTANT INSTRUCTIONS

### SAVE THESE INSTRUCTIONS FOR FUTURE REFERENCE

**This manual covers assembly, operation and troubleshooting.**

**800-654-4205 – 1100 Jefferson Street – Pacific, MO 63069 USA**

**[www.bbcind.com](http://www.bbcind.com)**

## **WARNINGS**

The operator should familiarize themselves with this manual and all the **WARNINGS** before installing or working on this heater to avoid potentially hazardous conditions, severe property damage, personal injury, or death.

1. BBC Industries is interested in the safe operations of this equipment. All wiring to this equipment must be connected to the source in strict accordance with all local codes having jurisdiction.
2. A dedicated electrical (earth) ground is required for proper operation of the equipment.
3. This equipment is meant for the drying/curing of non-flammable Plastisol and water-based screen-printing inks and dies on textiles or the like. Use for any other purpose may cause fire, electric shock, or injury to persons.
4. This heater is for indoor, non-residential use.
5. Install unit in a location with adequate emergency exits.
6. The dryer has hot and arcing or sparking parts inside. Do not use it in areas where gasoline, paint, or flammable vapors or liquids are used or stored.
7. Use the dryer in a well-ventilated space. Refer to the Safety Data Sheet (SDS) for any inks or dies that you are curing.
8. The area around this equipment should be designated as a work zone with only authorized personnel allowed in the work zone.
9. Keep the work zone clean and free of debris. A perimeter of at least 18 inches (.5 m) around the equipment is recommended.
10. Do Not use extension cords to power this equipment.
11. This equipment is hot when in use. To avoid burns, do not touch hot surfaces. Do not set objects on the unit.
12. Puncture of the heating element face may result in a shock hazard. Do not operate if heater face or power cord is damaged.
13. Do not operate the heater after it malfunctions. Disconnect power at service panel and have the dryer inspected by a qualified technician before reusing.
14. To disconnect the heater, turn off power and unplug the device.
15. When energizing the unit, be sure heater face is not within 3 ft. (1 m) of any combustible materials.
16. Do not leave the unit unintended while in use.
17. These units do not produce noise exceeding 70 dB(A).
18. Handle unit in a safe manner.

## MOUNTING INSTRUCTIONS

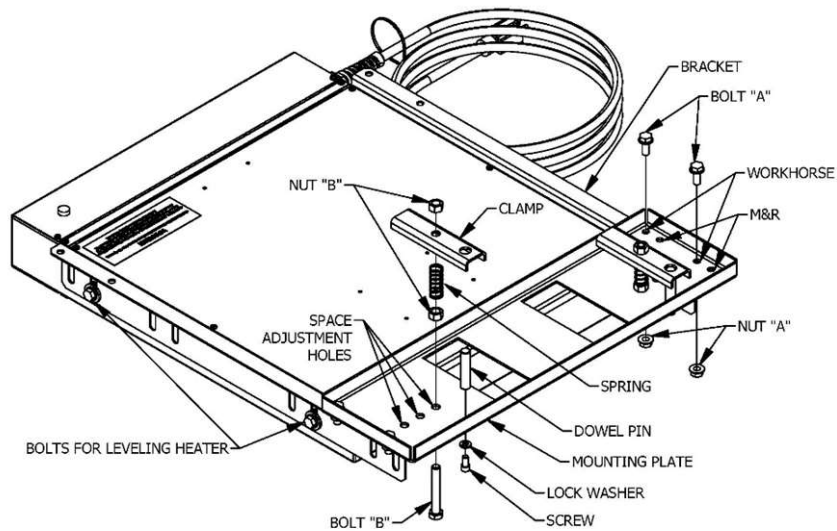


Fig. 1

### Mounting to Flood Bars:

1. Place bolts "A" and nuts "A" in the correct Mounting Plate hole positions and fasten. (This depends on what brand of press.) (See Fig. 1)
2. Determine what spacing is required between the two clamps. (This depends on what brand of press.)
3. To change spacing, remove nuts "B", clamp, and spring from bolt "B". Remove screw and lock washer from dowel pin.
4. Move the bolt "B" and dowel pin to required space adjustment holes and fasten to bracket.
5. Rotate clamps in Fig. 1 90 degrees to place flood bars underneath clamps shown in Fig. 2.
6. When flood bars are in position, rotate clamps back to the position shown in Fig. 1.
7. Tighten nuts "B" down to secure Auto Flash to flood bars on press.

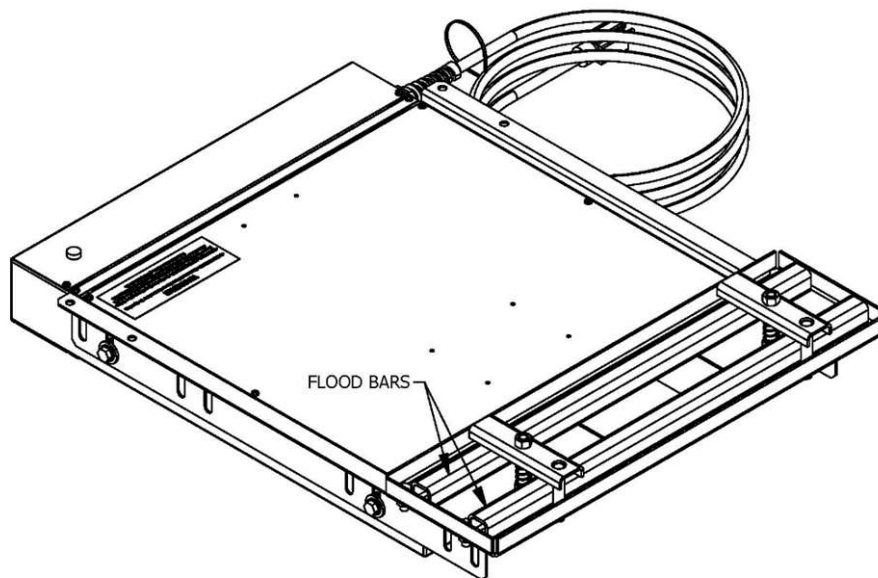


Fig. 2

## OPERATING INSTRUCTIONS

1. Heating elements will heat to operating temperature in approximately five minutes.
2. All operating / cure temperatures should be checked with temperature labels or temperature probe.
3. Use Suggested Operating Settings below to adjust Heat Control Settings and Approximate Dwell Times.

**Notice:** The Distance of Hot Face to Printing Surface may be different from what is in the table below.

### SUGGESTED OPERATING SETTINGS

	Distance of Hot Face to Printing Surface	Heat Control Setting	Approximate Dwell Time
Water Based Inks	4" from printing surface	60% to 100%	1 minute
Pre-Heating Nylon	2" to 3" from printing surface	30% to 40%	5 – 10 seconds
Flash Curing Nylon	2" to 3" from printing surface	100%	5 – 10 seconds
Curing Nylon	2" to 3" from printing surface	60% to 100%	15 – 20 seconds
Curing Plastisol	4" to 5" from printing surface	100%	30 – 40 seconds
Flashing Plastisol	4" to 5" from printing surface	100%	5 – 10 seconds



### CAUTION – HEAT PRODUCING UNIT, DO NOT LEAVE UNATTENDED

PRETEST ALL CURING SITUATIONS, INKS AND SUBSTRATES BEFORE PROCEEDING

**NOTE:**

- These are starting guidelines only and are recommended as initial settings.
- You should make your own tests to determine your specific requirements.
- **For ABF3-2200HC Auto Flash Dryers, consult a qualified electrician for a dedicated 120-volt, 20 Amp circuit prior to operation.**

Please contact the service department at *BBC Industries* (800-654-4205) or [service@bbcind.com](mailto:service@bbcind.com) with any questions regarding these instructions.

