

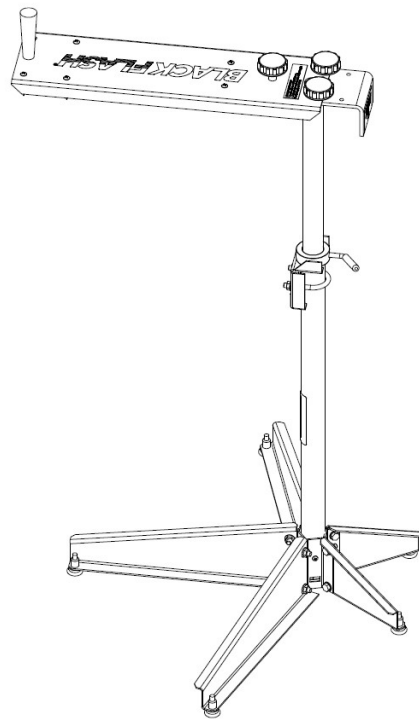


# ***BF12-SERIES***

## ***Flash Stand***

### ***Space Saver Leg Kit***

*(Original Document)*



## **IMPORTANT INSTRUCTIONS**

### **SAVE THESE INSTRUCTIONS FOR FUTURE REFERENCE**

Please review all these instructions prior to assembly.

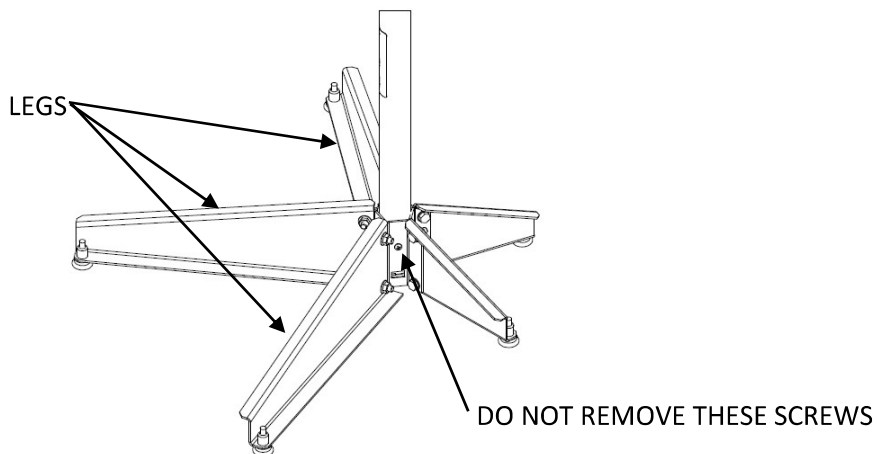
800-654-4205 – 1100 Jefferson Street – Pacific, MO 63069 USA

[www.bbcind.com](http://www.bbcind.com)

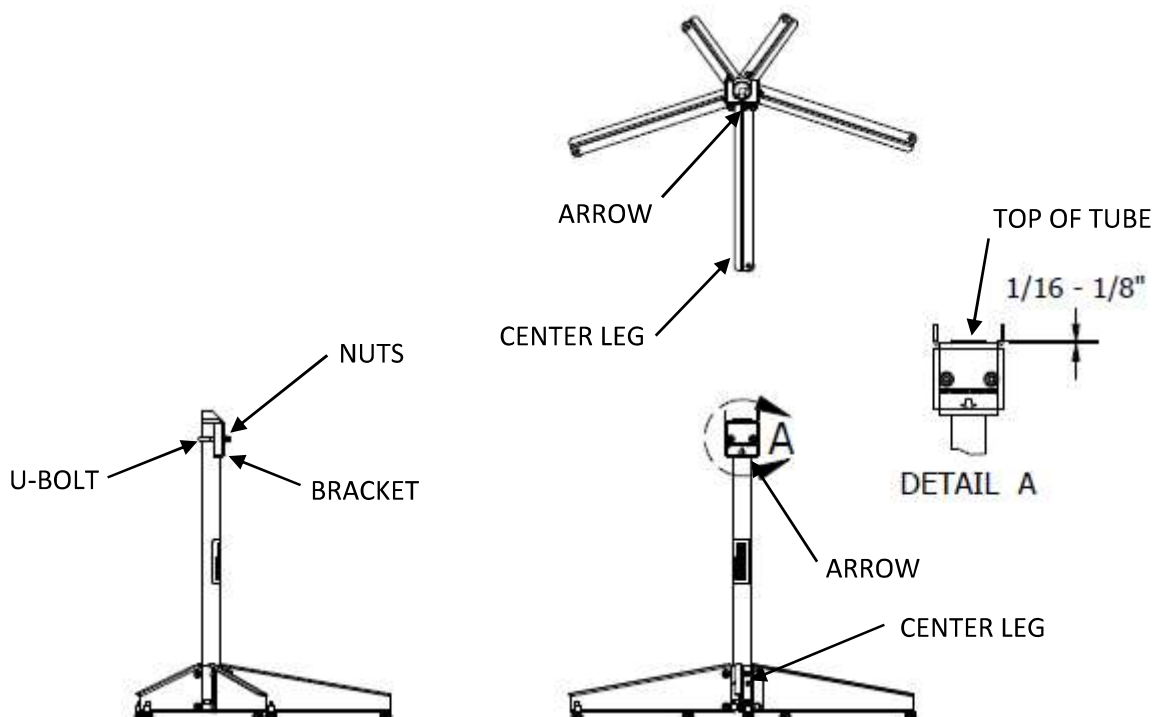
## Assembly Instructions:

Tools Required: ½-inch wrench.

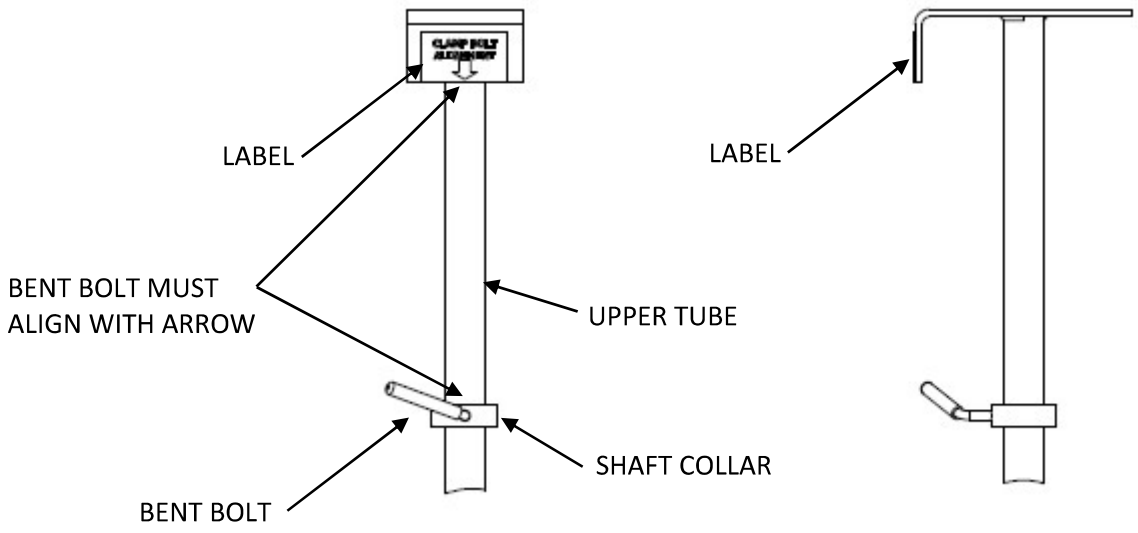
- Unpack, identify, and inspect all parts. Report any missing or damaged items.
  - The space saver stand will limit flash rotation to 110 degrees.
  - Refer to the *BF12-SERIES Flash Stands Owner's Manual* for assembly of your Flash Stand.
1. Remove the UPPER TUBE & FLASH HEATER from the STAND.
  2. Remove the two LONG LEGS not attached with SCREWS. Replace the LONG LEGS with the two SHORT LEGS.



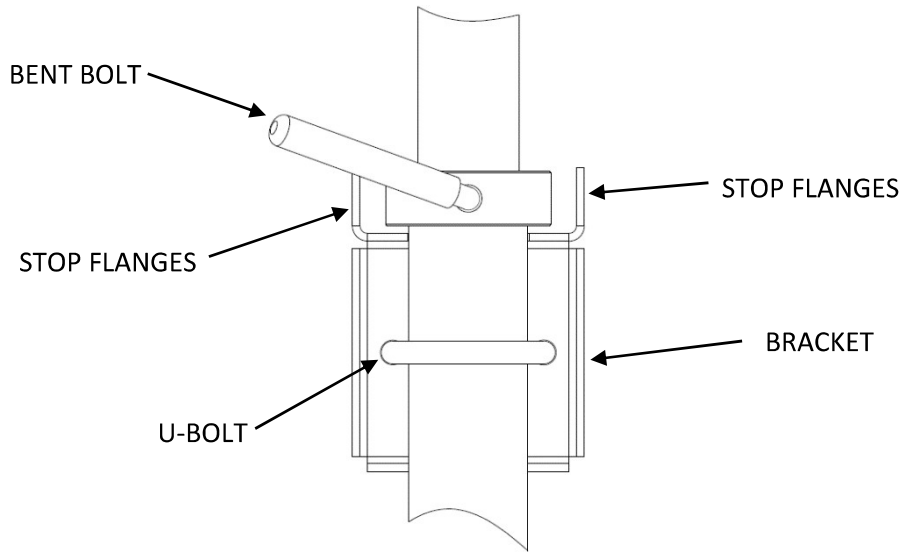
3. Install the BRACKET just below the top of the TUBE using the U-BOLT and NUTS. Orient the BRACKET with the ARROW aligned with the center LONG LEG.



4. Apply the LABEL to the curved plate on the UPPER TUBE of your Flash Stand. Adjust the SHAFT COLLAR to align the BENT BOLT with the ARROW.



5. Insert the UPPER TUBE into the LOWER TUBE capturing the BENT BOLT between the STOP FLANGES.



**CAUTION:** TO AVOID TIPPING OF THE HEATER. THE LONG CENTER LEG MUST BE ALIGNED WITH THE ARROW ON THE BRACKET, THE BENT BOLT ALIGNED WITH THE ARROW ON THE CURVED PLATE, AND THE BENT BOLT CAPTURED BETWEEN THE STOP FLANGES!

Please contact the service department at *BBC Industries* (800-654-4205) or [service@bbcind.com](mailto:service@bbcind.com) with any questions regarding these instructions.

