



Owner's Manual
FLASH-AMATIC
BFA-009FS

ORIGINAL DOCUMENT



IMPORTANT INSTRUCTIONS

SAVE THESE INSTRUCTIONS FOR FUTURE REFERENCE

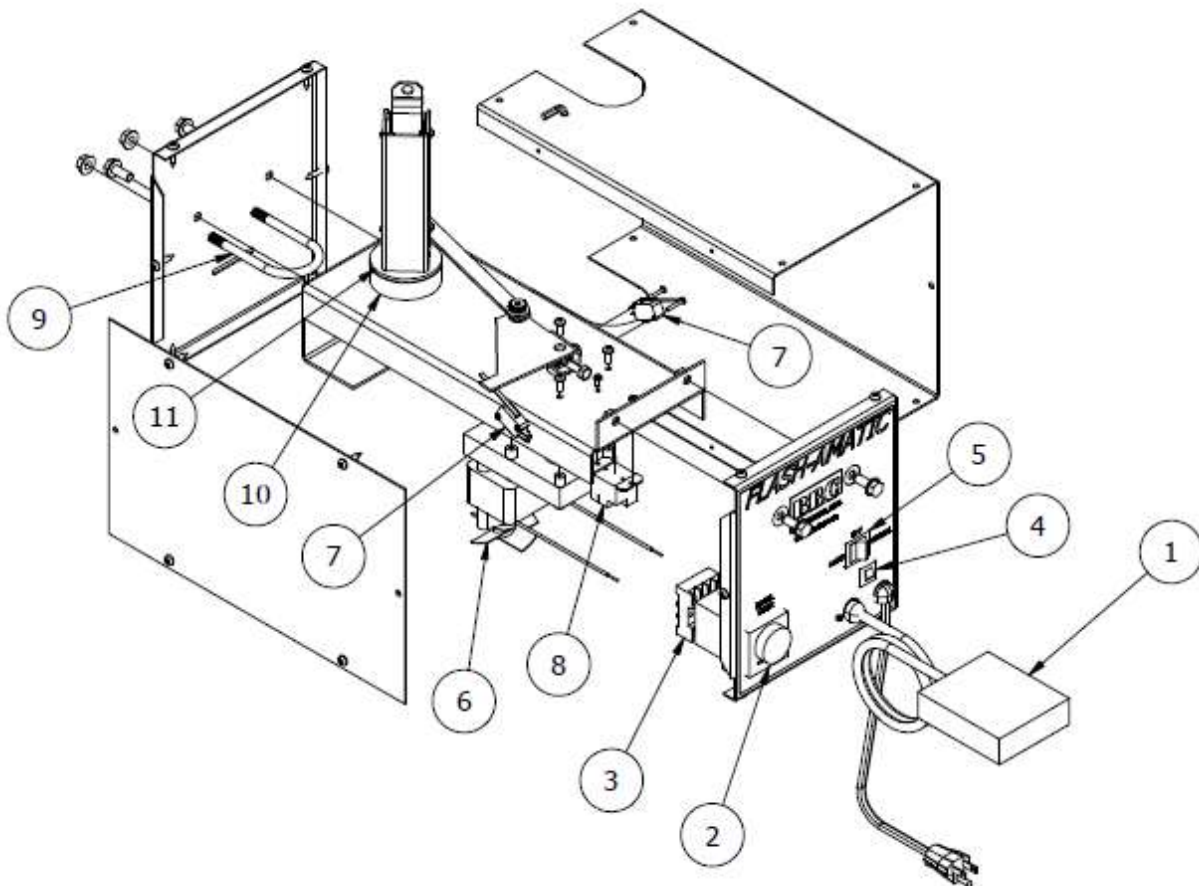
This manual covers assembly and operation.

800-654-4205 – 1100 Jefferson Street – Pacific, MO 63069 USA

www.bbcind.com

PARTS LIST:

ITEM NUMBER	PART NUMBER	QUANTITY	DESCRIPTION
1	97-149	1	FOOTSWITCH
2	79-037	1	DWELL TIMER
3	79-035	1	SOCKET 8-PIN
4	73-278	1	CIRCUIT BREAKER
5	DDA-05	1	SWITCH
6	08-245	1	GEARMOTOR
7	08-102	2	LIMIT SWITCH
8	82-926	1	RELAY
9	BFA02-09	1	U-BOLT
10	97-162	1	SHAFT COLLAR
11	97-152	1	BRONZE THRUST BEARING



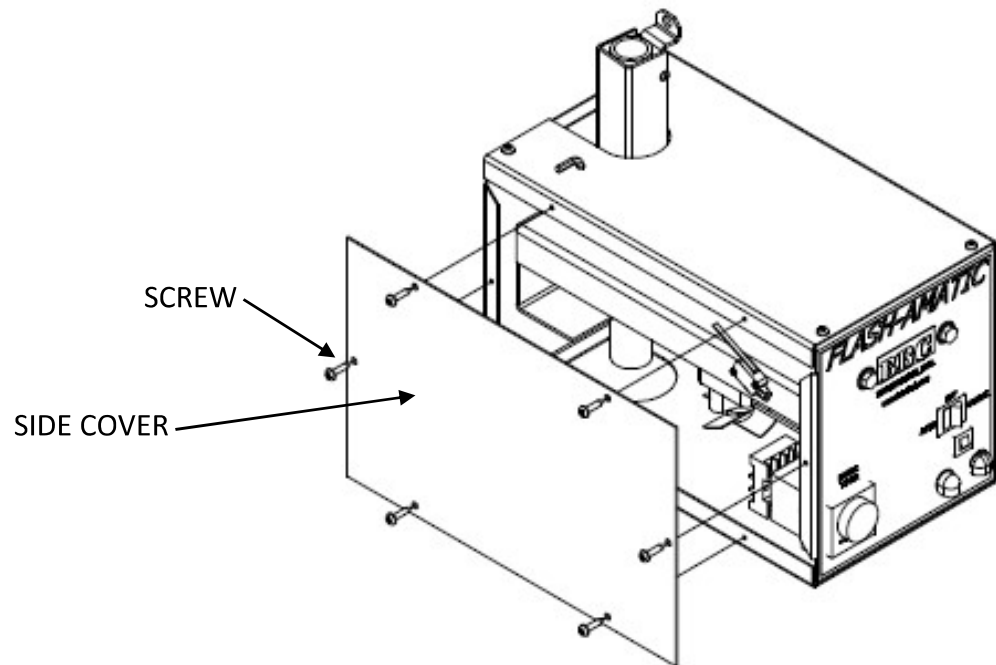
Please review all these instructions prior to assembly.

- The **FLASH-AMATIC** is designed to work with all BBC Flash Stand models. Some parts of these instructions reference parts from your Flash Stand assembly.
- Note that some portions of this assembly require 2 people.
- Unpack, identify, and inspect all parts. Report any missing or damaged items.

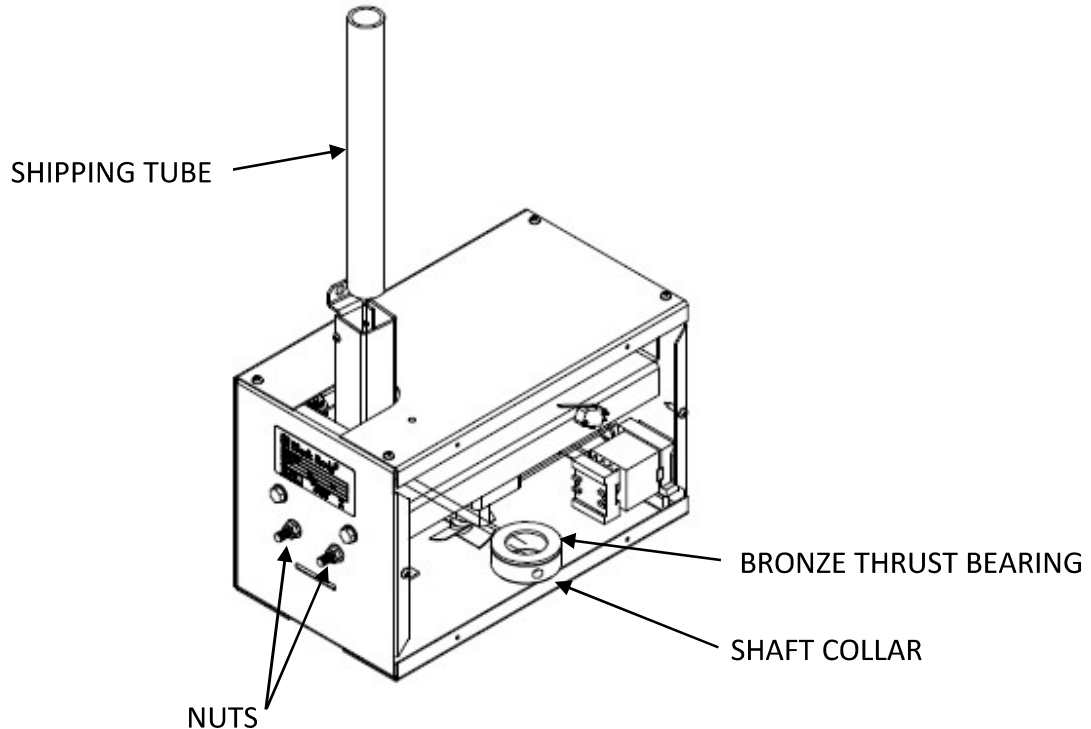
Tools Required: Hex-L Key (provided), 1/2-inch wrench, Phillips screwdriver.

ASSEMBLY INSTRUCTIONS:

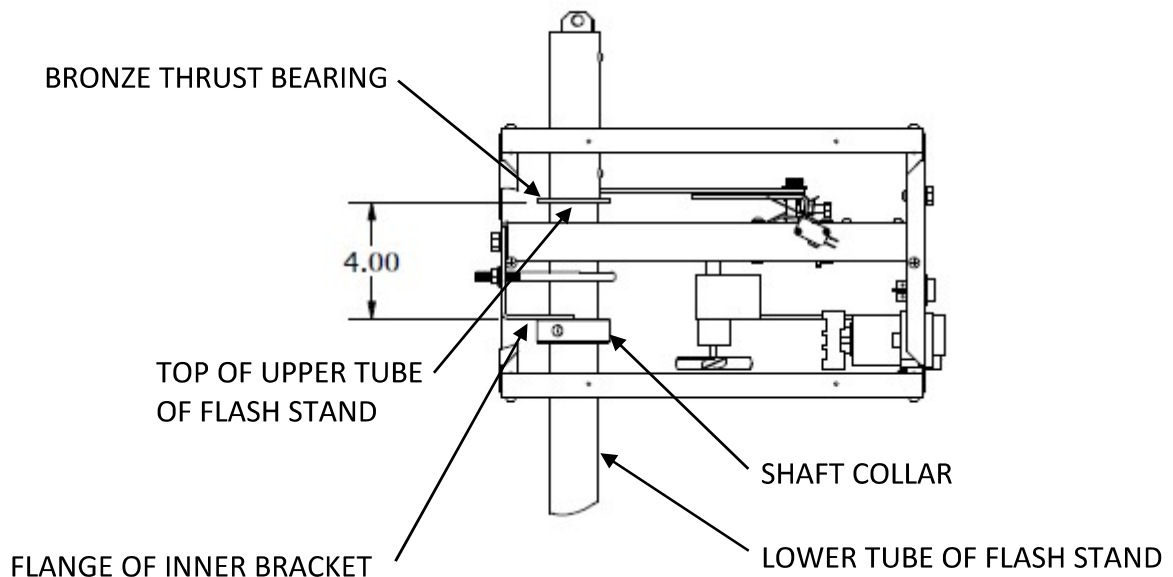
1. Remove the **SIDE COVER** by removing six **SCREWS**.



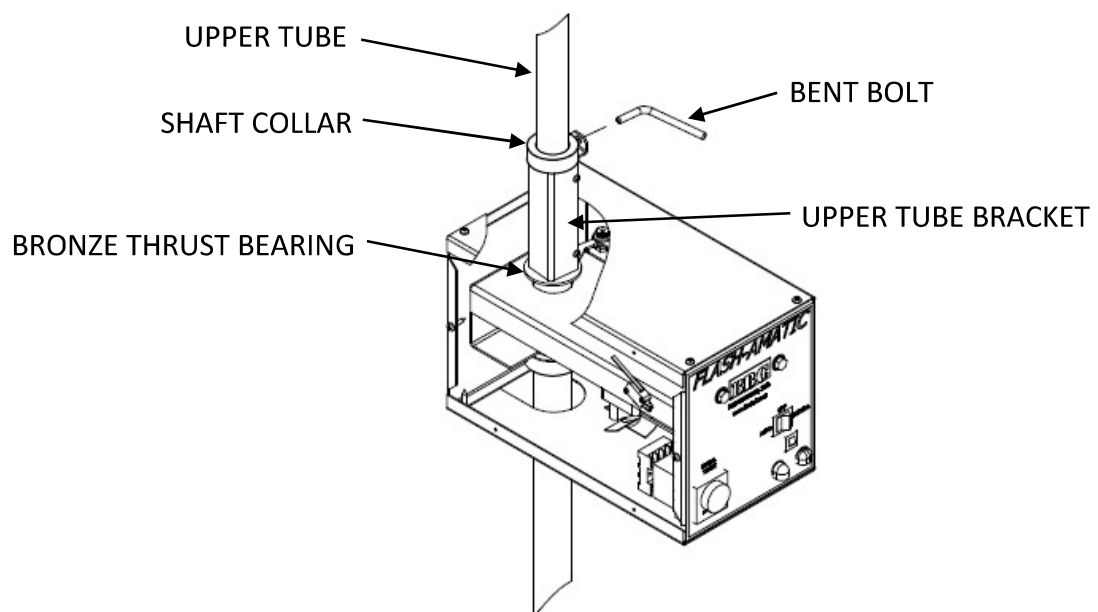
2. Loosen the two **NUTS** on the backside of the unit securing the **U-BOLT**.
3. Carefully cut the cable-tie that secures the **SHAFT COLLAR**, **BRONZE THRUST BEARING**, and **SHIPPING TUBE**. Discard the **SHIPPING TUBE**.



4. Locate the lower section of your Flash Stand that includes the **LOWER TUBE** and **LEGS**.
5. Install the **SHAFT COLLAR** from the previous step 4-inches from the top of the **LOWER TUBE**.
6. Tighten set screw with Hex-L Key.

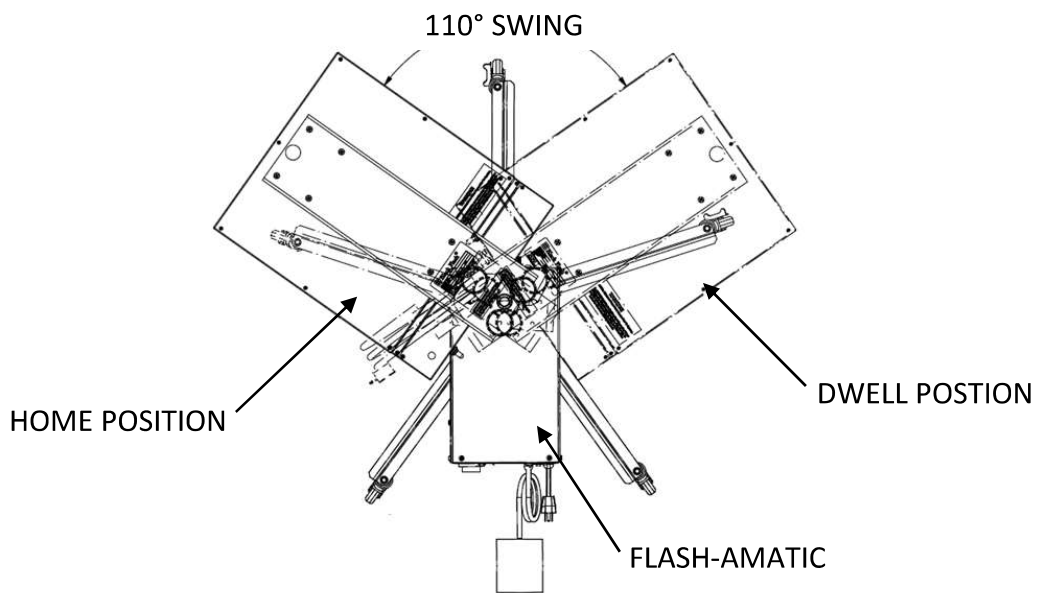


7. Place the **FLASH-AMATIC** over the **LOWER TUBE** of the Flash Stand. The **LOWER TUBE** fits through the notched **FLANGE**, **U-BOLT**, and hole of the **INNER BRACKET** and seats on the **FLANGE OF THE INNER BRACKET**.
8. Tighten the **NUTS** on the backside of the unit to secure the **U-BOLT** around the **LOWER TUBE** of the Flash Stand.
9. Place the **BRONZE THRUST BEARING** atop the **LOWER TUBE**, under the **UPPER TUBE BRACKET**.



10. Locate the **UPPER TUBE**, **SHAFT COLLAR**, and **BENT BOLT** of your Flash Stand. If your heater is attached to the **UPPER TUBE**, this step will require 2 people to safely assemble.
11. Remove the **BENT BOLT** from the **SHAFT COLLAR**.
12. Set the **SHAFT COLLAR** onto the **UPPER TUBE BRACKET** of the **FLASH-AMATIC**.
13. Insert the **BENT BOLT** through the hole in the **UPPER TUBE BRACKET**, threading it into the **COLLAR** a few turns to hold in place.
14. Insert the **UPPER TUBE** through the **SHAFT COLLAR**, the **UPPER TUBE BRACKET**, and the **BRONZE THRUST BEARING**, then into the **LOWER TUBE**.
15. Tighten the **BENT BOLT** against the **UPPER TUBE** at the desired height to secure.
16. Reattach the **SIDE COVER** using the six **SCREWS** removed in Step 1.

17. With the unit fully assembled, plug the **FLASH-AMATIC** into an appropriate power source.
18. Switch the unit into **AUTO** and press the **FOOT SWITCH**.
19. Allow the **FLASH-AMATIC** to rotate through the **110° SWING**, **DWELL**, and return to the **HOME POSITION**.
20. Adjust the position of the Flash Heater (if needed) to prevent the Flash Heater from traveling over the **FLASH-AMATIC**. (See figure below).
21. **DO NOT** adjust the Flash Heater while the unit is **HOT**.



OPERATING INSTRUCTIONS:

Note: This unit has 2 modes of operation, **Automatic & Manual**.

Automatic:

Depressing the foot pedal will rotate the heater CW 110°, dwell per timer setting and return to home position.

1. Move rocker switch to Automatic.
2. Set timer to desired dwell time. (see timer settings)
3. Tap foot switch to start cycle. (When operating at 100 volts, hold foot switch for 1 second and release.)

Manual:

Depressing & holding the foot pedal will rotate the heater CW 110° then rotate the heater CCW 110°. Removing foot will stop the cycle in any position.

1. Move rocker switch to Manual.
2. Depress and hold foot switch to desired location.
3. Remove foot to stop cycle.

